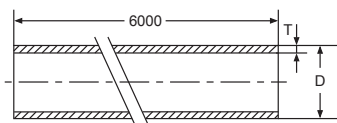
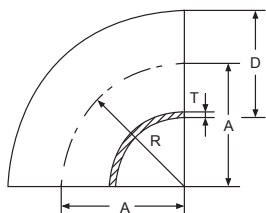


Tube



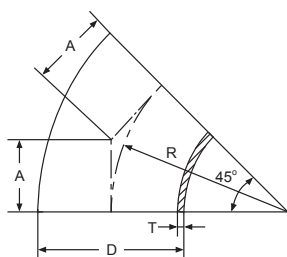
Size	DxT
Inch	mmxmm
1/2	12.7x1.65
3/4	19.05x1.65
1	25.4x1.65
1 1/2	38.1x1.65
2	50.8x1.65
2 1/2	63.5x1.65
3	76.2x1.65
4	101.6x2.11
6	152.4x2.80

90° Elbow



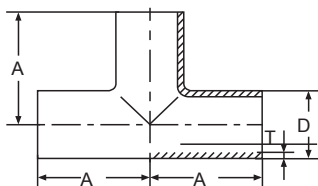
Size	DxT	A		R	
		Inch	mm	Inch	mm
1/2	12.7x1.65	3/4	19.05	3/4	19.05
3/4	19.05x1.65	1 1/8	28.6	1 1/8	28.6
1	25.4x1.65	1 1/2	38.1	1 1/2	38.1
1 1/2	38.1x1.65	2 1/4	57.2	2 1/4	57.2
2	50.8x1.65	3	76.2	3	76.2
2 1/2	63.5x1.65	3 3/4	95.3	3 3/4	95.3
3	76.2x1.65	4 1/2	114.3	4 1/2	114.3
4	101.6x2.11	6	152.4	6	152.4
6	152.4x2.80	9	228.6	9	228.6

45° Elbow



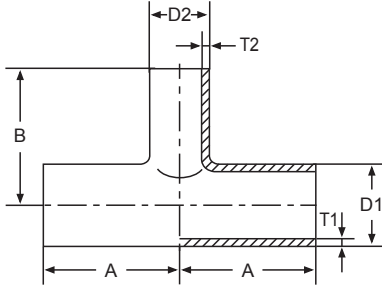
Size	DxT	A		R	
		Inch	mm	Inch	mm
1/2	12.7x1.65	9/32	7.1	3/4	19.05
3/4	19.05x1.65	15/32	11.9	1 1/8	28.6
1	25.4x1.65	5/8	15.9	1 1/2	38.1
1 1/2	38.1x1.65	15/16	23.8	2 1/4	57.2
2	50.8x1.65	1 1/4	31.8	3	76.2
2 1/2	63.5x1.65	1 9/16	39.7	3 3/4	95.3
3	76.2x1.65	1 7/8	47.6	4 1/2	114.3
4	101.6x2.11	2 1/2	63.5	6	152.4
6	152.4x2.80	3 3/4	95.3	9	228.6

Equal Tee



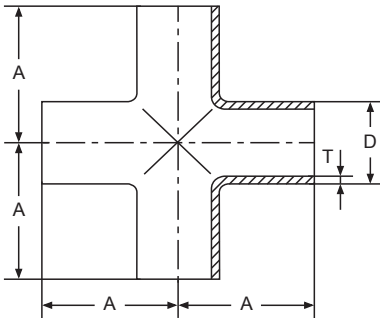
Size	DxT	A	
		Inch	mm
1/2	12.7x1.65	1 7/8	47.6
3/4	19.05x1.65	1 7/8	47.6
1	25.4x1.65	1 7/8	47.6
1 1/2	38.1x1.65	2 1/4	57.2
2	50.8x1.65	3	76.2
2 1/2	63.5x1.65	3 3/4	76.2
3	76.2x1.65	4 1/2	82.6
4	101.6x2.11	6	98.4
6	152.4x2.80	9	127

Reducing Tee



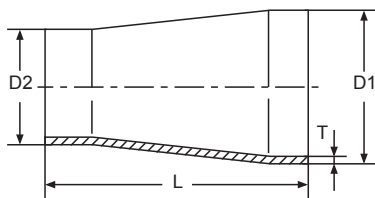
Size	D1xT1	D2xT2	A		B	
			Inch	mm	Inch	mm
3/4x1/2	19.05x1.65	12.7x1.65	17/8	47.6	1	38.1
1x1/2	25.4x1.65	12.7x1.65	17/8	47.6	1 1/2	38.1
1x3/4	25.4x1.65	19.05x1.65	17/8	47.6	2	50.8
1 1/2x3/4	38.1x1.65	19.05x1.65	2 1/4	57.2	2 1/4	57.2
1 1/2x1	38.1x1.65	25.4x1.65	2 1/4	57.2	2 1/8	54
2x1	50.8x1.65	25.4x1.65	3	76.2	2 3/8	60.3
2x1 1/2	50.8x1.65	38.1x1.65	3	76.2	2 1/2	63.5
2 1/2x1 1/2	63.5x1.65	38.1x1.65	3	76.2	2 3/4	69.9
2 1/2x2	63.5x1.65	50.8x1.65	3	76.2	3 1/4	82.6
3x1 1/2	76.2x1.65	38.1x1.65	3 1/4	82.6	3	76.2
3x2	76.2x1.65	50.8x1.65	3 1/4	82.6	3 1/2	88.9
3x2 1/2	76.2x1.65	63.5x1.65	3 1/4	82.6	3 1/4	82.6
4x2	101.6x2.11	50.8x1.65	3 7/8	98.4	4	101.6
4x2 1/2	101.6x2.11	63.5x1.65	3 7/8	98.4	3 3/4	95.3
4x3	101.6x2.11	76.2x1.65	3 7/8	98.4	3 3/4	95.3
6x2	152.4x2.80	50.8x1.65	5	127	4 3/4	120.7
6x3	152.4x2.80	76.2x1.65	5	127	4 3/4	120.7
6x4	152.4x2.80	101.6x2.11	5	127	4 7/8	123.8

Cross Tee



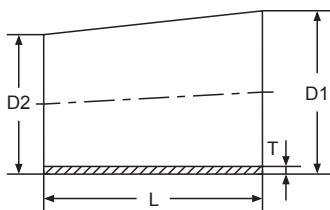
Size	DxT	A	
		Inch	mm
1/2	12.7x1.65	1 7/8	47.6
3/4	19.05x1.65	1 7/8	47.6
1	25.4x1.65	1 7/8	47.6
1 1/2	38.1x1.65	2 1/4	57.2
2	50.8x1.65	3	76.2
2 1/2	63.5x1.65	3	76.2
3	76.2x1.65	3 1/4	82.6
4	101.6x2.11	3 7/8	98.4
6	152.4x2.80	5	127

Reducer Concentric



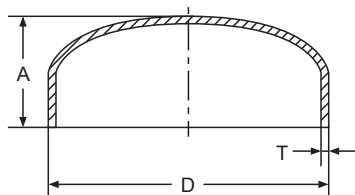
Size Inch	D1xD2xT mmxmm	L	
		Inch	mm
1×¾	25.4×19.05x1.65	2¾	60.3
1½×¾	38.1×19.05x1.65	2¾	60.3
1½×1	38.1×25.4x1.65	2¾	60.3
2×1	50.8×25.4x1.65	2¾	60.3
2×1½	50.8×38.1x1.65	2¾	60.3
2½×1½	63.5×38.1x1.65	2¾	60.3
2½×2	63.5×50.8x1.65	2¾	60.3
3×1½	76.2×38.1x1.65	3½	92.1
3×2	76.2×50.8x1.65	3½	92.1
3×2½	76.2×63.5x1.65	3½	92.1
4×2	101.6×50.8x2.11	3½	92.1
4×2½	101.6×63.5x2.11	3½	92.1
4×3	101.6×76.2x2.11	3½	92.1
6×3	152.4×76.2x2.80	9	228.6
6×4	154.2×101.6x2.80	9	228.6

Reducer Eccentric



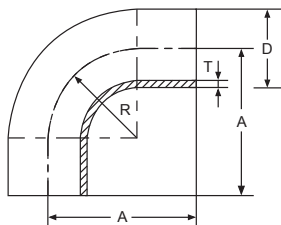
Size Inch	D1xD2xT mmxmm	L	
		Inch	mm
1×¾	25.4×19.05x1.65	1	25.4
1½×¾	38.1×19.05x1.65	3	76.2
1½×1	38.1×25.4x1.65	2	50.8
2×1	50.8×25.4x1.65	4	101.6
2×1½	50.8×38.1x1.65	2	50.8
2½×1½	63.5×38.1x1.65	4	101.6
2½×2	63.5×50.8x1.65	2	50.8
3×1½	76.2×38.1x1.65	6	152.4
3×2	76.2×50.8x1.65	4	101.6
3×2½	76.2×63.5x1.65	2	50.8
4×2	101.6×50.8x2.11	8	203.2
4×2½	101.6×63.5x2.11	6	152.4
4×3	101.6×76.2x2.11	4	101.6
6×3	152.4×76.2x2.80	9	228.6
6×4	154.2×101.6x2.80	9	228.6

Tube End Cap



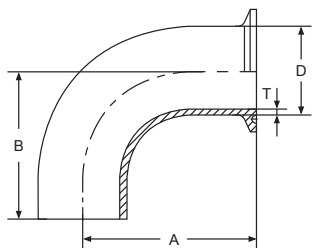
Size Inch	DxT mmxmm	A	
		Inch	mm
½	12.7x1.65	¼	6.4
¾	19.05x1.65	⅝	7.9
1	25.4x1.65	¾	9.5
1½	38.1x1.65	⅞	14.3
2	50.8x1.65	¾	19.1
2½	63.5x1.65	1	25.4
3	76.2x1.65	1¼	31.8
4	101.6x2.11	1½	38.1
6	152.4x2.80	2¼	57.2

90° Elbow Long



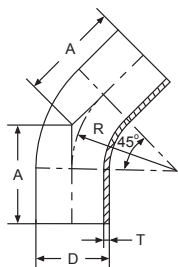
Size	DxT	A		R	
		Inch	mm	Inch	mm
1	25.4x1.65	2 ¹ / ₁₆	52.4	1 ¹ / ₂	38.1
1 ¹ / ₂	38.1x1.65	2 ¹⁵ / ₁₆	74.6	2 ¹ / ₄	57.2
2	50.8x1.65	4 ¹ / ₁₆	103.2	3	76.2
2 ¹ / ₂	63.5x1.65	5 ³ / ₁₆	131.8	3 ³ / ₄	95.3
3	76.2x1.65	6 ⁹ / ₁₆	160.3	4 ¹ / ₂	114.3
4	101.6x2.11	8 ⁵ / ₁₆	211.1	6	152.4

90° Elbow Ferrule/Weld



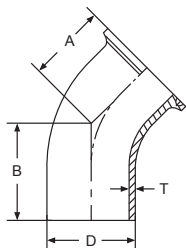
Size	DxT	A		B	
		Inch	mm	Inch	mm
1	25.4x1.65	2 ⁹ / ₁₆	65.1	2 ¹ / ₁₆	52.4
1 ¹ / ₂	38.1x1.65	3 ⁷ / ₁₆	87.3	2 ¹⁵ / ₁₆	74.6
2	50.8x1.65	4 ⁹ / ₁₆	115.9	4 ¹ / ₁₆	103.2
2 ¹ / ₂	63.5x1.65	5 ¹¹ / ₁₆	144.5	5 ³ / ₁₆	131.8
3	76.2x1.65	6 ¹³ / ₁₆	173	6 ⁵ / ₁₆	160.3
4	101.6x2.11	8 ¹⁵ / ₁₆	227	8 ⁵ / ₁₆	211.1

45° Elbow Long



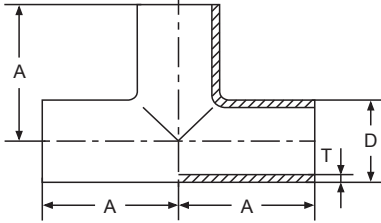
Size	DxT	A		R	
		Inch	mm	Inch	mm
1	25.4x1.65	1 ³ / ₁₆	30.2	1 ¹ / ₂	38.1
1 ¹ / ₂	38.1x1.65	1 ⁵ / ₈	41.3	2 ¹ / ₄	57.2
2	50.8x1.65	2 ⁵ / ₁₆	58.7	3	76.2
2 ¹ / ₂	63.5x1.65	3	76.2	3 ³ / ₄	95.3
3	76.2x1.65	3 ¹¹ / ₁₆	93.7	4 ¹ / ₂	114.3
4	101.6x2.11	4 ¹³ / ₁₆	122.2	6	152.4

45° Elbow Ferrule/Weld



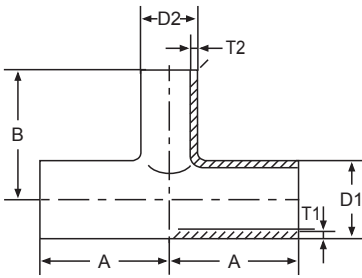
Size	DxT	A		B	
		Inch	mm	Inch	mm
1	25.4x1.65	1 ¹¹ / ₁₆	42.9	1 ³ / ₁₆	30.2
1 ¹ / ₂	38.1x1.65	2 ¹ / ₈	54	1 ⁵ / ₈	41.3
2	50.8x1.65	2 ¹³ / ₁₆	71.4	2 ⁹ / ₁₆	58.7
2 ¹ / ₂	63.5x1.65	3 ¹ / ₂	88.9	3	76.2
3	76.2x1.65	4 ³ / ₁₆	106.4	3 ¹¹ / ₁₆	93.7
4	101.6x2.11	5 ⁷ / ₁₆	138.1	4 ¹³ / ₁₆	122.2

Equal Tee



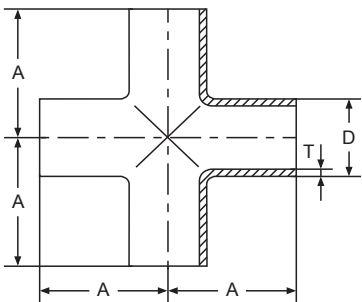
Size	DxT	A	
		Inch	mm
1	25.4x1.65	1 ¹ / ₈	28.6
1 ¹ / ₂	38.1x1.65	1 ²¹ / ₃₂	42.1
2	50.8x1.65	2 ¹ / ₁₆	52.4
2 ¹ / ₂	63.5x1.65	2 ¹¹ / ₃₂	59.5
3	76.2x1.65	2 ¹⁹ / ₃₂	65.9
4	101.6x2.11	3 ⁷ / ₁₆	87.3

Reducing Tee



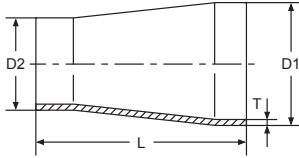
Size	D1xT1	D2xT2	A		B	
			Inch	mm	Inch	mm
1 ¹ / ₂ x1	38.1x1.65	25.4x1.65	1 ³¹ / ₃₂	42.1	1 ¹ / ₈	34.9
2x1	50.8x1.65	25.4x1.65	2 ¹ / ₁₆	52.4	1 ⁵ / ₈	41.3
2x1 ¹ / ₂	50.8x1.65	38.1x1.65	2 ¹ / ₁₆	52.4	1 ²⁹ / ₃₂	48.4
2 ¹ / ₂ x1	63.5x1.65	25.4x1.65	2 ¹¹ / ₃₂	59.5	1 ⁷ / ₈	47.6
2 ¹ / ₂ x1 ¹ / ₂	63.5x1.65	38.1x1.65	2 ¹¹ / ₃₂	59.5	2 ⁵ / ₃₂	54.8
2 ¹ / ₂ x2	63.5x1.65	50.8x1.65	2 ¹¹ / ₃₂	59.5	2 ⁹ / ₁₆	58.7
3x1	76.2x1.65	25.4x1.65	2 ¹⁹ / ₃₂	65.9	2 ¹ / ₈	54
3x1 ¹ / ₂	76.2x1.65	38.1x1.65	2 ¹⁹ / ₃₂	65.9	2 ¹³ / ₃₂	61.1
3x2	76.2x1.65	50.8x1.65	2 ¹⁹ / ₃₂	65.9	2 ⁹ / ₁₆	65.1
3x2 ¹ / ₂	76.2x1.65	63.5x1.65	2 ¹⁹ / ₃₂	65.9	2 ¹⁹ / ₃₂	65.9
4x1	101.6x2.11	25.4x1.65	3 ⁷ / ₁₆	87.3	2 ⁵ / ₈	66.7
4x1 ¹ / ₂	101.6x2.11	38.1x1.65	3 ⁷ / ₁₆	87.3	2 ²⁹ / ₃₂	73.8
4x2	101.6x2.11	50.8x1.65	3 ⁷ / ₁₆	87.3	3 ¹ / ₁₆	77.8
4x2 ¹ / ₂	101.6x2.11	63.5x1.65	3 ⁷ / ₁₆	87.3	3 ³ / ₃₂	78.6
4x3	101.6x2.11	76.2x1.65	3 ⁷ / ₁₆	87.3	3 ³ / ₃₂	78.6
6x3	152.4x2.80	76.2x1.65	5	127	4 ³ / ₄	120.7
6x4	152.4x2.80	101.6x2.11	5	127	4 ⁷ / ₈	123.8

Cross Tee



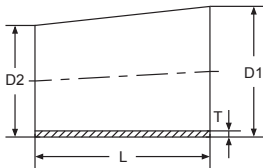
Size	DxT	A	
		Inch	mm
1	25.4x1.65	1 ¹ / ₈	28.6
1 ¹ / ₂	38.1x1.65	1 ²¹ / ₃₂	42.1
2	50.8x1.65	2 ¹ / ₁₆	52.4
2 ¹ / ₂	63.5x1.65	2 ¹¹ / ₃₂	59.5
3	76.2x1.65	2 ¹⁹ / ₃₂	65.9
4	101.6x2.11	3 ⁷ / ₁₆	87.3

Reducer Concentric



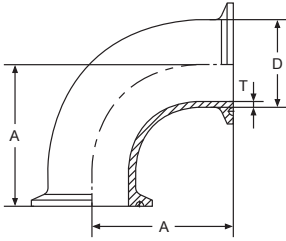
Size	D1xD1xT mmxmm	L	
		Inch	mm
1 $\frac{1}{4}$ x $\frac{3}{4}$	31.8×19.05x1.65	2 $\frac{3}{8}$	60.3
1 $\frac{1}{4}$ x1	31.8×25.4x1.65	2 $\frac{3}{8}$	60.3
1 $\frac{1}{2}$ x1 $\frac{1}{4}$	38.1×31.8x1.65	2 $\frac{3}{8}$	60.3
1 $\frac{1}{2}$ x1	38.1×25.4x1.65	2 $\frac{3}{8}$	60.3
2x $\frac{1}{2}$	50.8×12.7x1.65	4 $\frac{3}{8}$	111.1
2x $\frac{3}{4}$	50.8×19.05x1.65	4	101.6
2x1	50.8×25.4x1.65	2 $\frac{3}{8}$	60.3
2x1 $\frac{1}{4}$	50.8×31.8x1.65	2 $\frac{3}{8}$	60.3
2x1 $\frac{1}{2}$	50.8×38.1x1.65	2 $\frac{3}{8}$	60.3
2 $\frac{1}{2}$ x1	63.5×25.4x1.65	4 $\frac{3}{8}$	101.6
2 $\frac{1}{2}$ x1 $\frac{1}{4}$	63.5×31.8x1.65	4	101.6
2 $\frac{1}{2}$ x1 $\frac{1}{2}$	63.5×38.1x1.65	2 $\frac{3}{8}$	60.3
2 $\frac{1}{2}$ x2	63.5×50.8x1.65	2 $\frac{3}{8}$	60.3
3x1	76.2×25.4x1.65	5 $\frac{1}{4}$	133.4
3x1 $\frac{1}{2}$	76.2×38.1x1.65	3 $\frac{5}{8}$	92
3x2	76.2×50.8x1.65	3 $\frac{5}{8}$	92
3x2 $\frac{1}{2}$	76.2×63.5x1.65	3 $\frac{5}{8}$	92
4x1 $\frac{1}{2}$	101.6×38.1x2.11	3 $\frac{5}{8}$	92
4x2	101.6×50.8x2.11	3 $\frac{5}{8}$	92
4x2 $\frac{1}{2}$	101.6×63.5x2.11	3 $\frac{5}{8}$	92
4x3	101.6×76.2x2.11	3 $\frac{5}{8}$	92
6x3	152.4×76.2x2.80	9	228.6
6x4	152.4×101.6x2.80	9	228.6

Reducer Eccentric



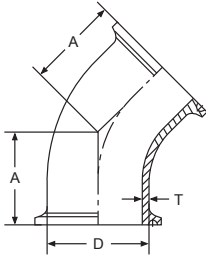
Size	D1xD1xT mmxmm	L	
		Inch	mm
1 $\frac{1}{2}$ x1	38.1×25.4x1.65	2	50.8
2x1	50.8×25.4x1.65	4	101.6
2x1 $\frac{1}{2}$	50.8×38.1x1.65	2	50.8
2 $\frac{1}{2}$ x1	63.5×25.4x1.65	6	152.4
2 $\frac{1}{2}$ x1 $\frac{1}{2}$	63.5×38.1x1.65	4	101.6
2 $\frac{1}{2}$ x2	63.5×50.8x1.65	2	50.8
3x1	76.2×25.4x1.65	8	203.2
3x1 $\frac{1}{2}$	76.2×38.1x1.65	6	152.4
3x2	76.2×50.8x1.65	4	101.6
3x2 $\frac{1}{2}$	76.2×63.5x1.65	2	50.8
4x1	101.6×25.4x2.11	12	304.8
4x1 $\frac{1}{2}$	101.6×38.1x2.11	10	254
4x2	101.6×50.8x2.11	8	203.2
4x2 $\frac{1}{2}$	101.6×63.5x2.11	6	152.4
4x3	101.6×76.2x2.11	4	101.6
6x3	152.4×76.2x2.80	9	228.6
6x4	152.4×101.6x2.80	9	228.6

90° Elbow Ferrule Ends



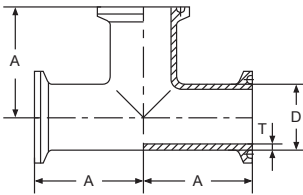
Size	DxT	A	
		Inch	mm
1/2	12.7x1.65	1 1/4	31.8
3/4	19.05x1.65	1 5/8	41.3
1	25.4x1.65	2	50.8
1 1/2	38.1x1.65	2 3/4	69.9
2	50.8x1.65	3 1/2	88.9
2 1/2	63.5x1.65	4 1/4	108
3	76.2x1.65	5	127
4	101.6x2.11	6 5/8	168.3
6	152.4x2.80	10 1/2	266.7

45° Elbow Ferrule Ends



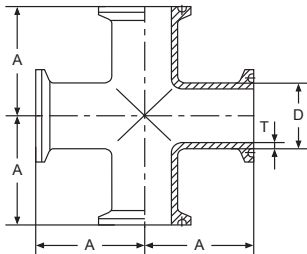
Size	DxT	A	
		Inch	mm
1/2	12.7x1.65	2 5/32	19.8
3/4	19.05x1.65	3 1/32	24.6
1	25.4x1.65	1 1/8	28.6
1 1/2	38.1x1.65	1 7/16	36.5
2	50.8x1.65	1 3/4	44.5
2 1/2	63.5x1.65	2 1/16	52.4
3	76.2x1.65	2 3/8	60.3
4	101.6x2.11	3 1/8	79.4
6	152.4x2.80	5 1/4	133.4

Tee Ferrule Ends



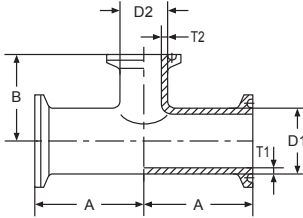
Size	DxT	A	
		Inch	mm
1/2	12.7x1.65	1 1/4	31.8
3/4	19.05x1.65	2 3/8	60.3
1	25.4x1.65	2 3/8	60.3
1 1/2	38.1x1.65	2 3/4	69.9
2	50.8x1.65	3 1/2	88.9
2 1/2	63.5x1.65	3 1/2	88.9
3	76.2x1.65	3 3/4	95.3
4	101.6x2.11	4 1/2	114.3
6	152.4x2.80	6 1/2	165.1

Cross Tee Ferrule Ends



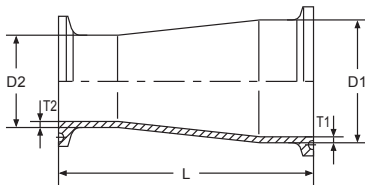
Size	DxT	A	
		Inch	mm
1/2	12.7x1.65	1 1/4	31.8
3/4	19.05x1.65	2 3/8	60.3
1	25.4x1.65	2 3/8	60.3
1 1/2	38.1x1.65	2 3/4	69.9
2	50.8x1.65	3 1/2	88.9
2 1/2	63.5x1.65	3 1/2	88.9
3	76.2x1.65	3 3/4	95.3
4	101.6x2.11	4 1/2	114.3
6	152.4x2.80	6 1/2	165.1

Reducing Tee Ferrule Ends



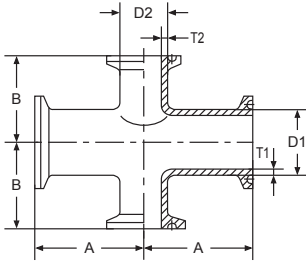
Size	D1xT1	D2xT2	A		B	
			Inch	mm	Inch	mm
3/4x1/2	19.05x1.65	12.7x1.65	2 ⁹ / ₁₆	66.7	2 ⁹ / ₈	66.7
1x1/2	25.4x1.65	12.7x1.65	2 ⁹ / ₁₆	66.7	2 ⁹ / ₈	66.7
1x3/4	25.4x1.65	19.05x1.65	2 ⁹ / ₁₆	66.7	2 ⁹ / ₈	66.7
1 1/2x1/2	38.1x1.65	12.7x1.65	2 ⁷ / ₈	73	2 ⁷ / ₈	73
1 1/2x3/4	38.1x1.65	19.05x1.65	2 ⁷ / ₈	73	2 ⁷ / ₈	73
1 1/2x1	38.1x1.65	25.4x1.65	2 ⁵ / ₃₂	54.8	1 ⁷ / ₈	47.6
2x1/2	50.8x1.65	12.7x1.65	2 ⁹ / ₁₆	65.1	2 ¹ / ₈	54
2x3/4	50.8x1.65	19.05x1.65	2 ⁹ / ₁₆	65.1	2 ¹ / ₈	54
2x1	50.8x1.65	25.4x1.65	2 ⁹ / ₁₆	65.1	2 ¹ / ₈	54
2x1 1/2	50.8x1.65	38.1x1.65	2 ⁹ / ₁₆	65.1	2 ¹³ / ₃₂	61.1
2 1/2x1/2	63.5x1.65	12.7x1.65	2 ²⁷ / ₃₂	72.2	2 ³ / ₈	60.3
2 1/2x3/4	63.5x1.65	19.05x1.65	2 ²⁷ / ₃₂	72.2	2 ³ / ₈	60.3
2 1/2x1	63.5x1.65	25.4x1.65	2 ²⁷ / ₃₂	72.2	2 ³ / ₈	60.3
2 1/2x1 1/2	63.5x1.65	38.1x1.65	2 ²⁷ / ₃₂	72.2	2 ²¹ / ₃₂	67.5
2 1/2x2	63.5x1.65	50.8x1.65	2 ²⁷ / ₃₂	72.2	2 ¹³ / ₁₆	71.4
3x3/4	76.2x1.65	19.05x1.65	3 ³ / ₃₂	78.6	2 ⁹ / ₈	66.7
3x1	76.2x1.65	25.4x1.65	3 ³ / ₃₂	78.6	2 ⁹ / ₈	66.7
3x1 1/2	76.2x1.65	38.1x1.65	3 ³ / ₃₂	78.6	2 ²⁹ / ₃₂	73.8
3x2	76.2x1.65	50.8x1.65	3 ³ / ₃₂	78.6	3 ¹ / ₁₆	77.8
3x2 1/2	76.2x1.65	63.5x1.65	3 ³ / ₃₂	78.6	3 ³ / ₃₂	78.6
4x1	101.6x2.11	25.4x1.65	4 ¹ / ₁₆	103.2	3 ¹ / ₈	79.4
4x1 1/2	101.6x2.11	38.1x1.65	4 ¹ / ₁₆	103.2	3 ¹³ / ₃₂	86.5
4x2	101.6x2.11	50.8x1.65	4 ¹ / ₁₆	103.2	3 ¹⁹ / ₃₂	91.3
4x2 1/2	101.6x2.11	63.5x1.65	4 ¹ / ₁₆	103.2	3 ¹⁹ / ₃₂	91.3
4x3	101.6x2.11	76.2x1.65	4 ¹ / ₁₆	103.2	3 ¹⁹ / ₃₂	91.3
6x3	152.4x2.80	76.2x1.65	5 ⁷ / ₈	149.2	5 ¹ / ₄	133.4
6x4	152.4x2.80	101.6x2.11	5 ⁷ / ₈	149.2	5 ¹ / ₂	139.7

Ferrule Reducer Concentric Ferrule Ends



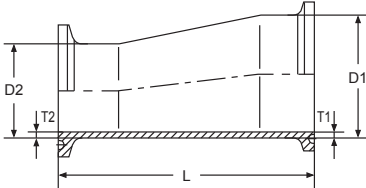
Size	D1xT1	D2xT2	L	
			Inch	mm
3/4x1/2	19.05x1.65	12.7x1.65	2	50.8
1x1/2	25.4x1.65	12.7x1.65	3 ³ / ₈	85.7
1x3/4	25.4x1.65	19.05x1.65	3 ³ / ₈	85.7
1 1/2x1/2	38.1x1.65	12.7x1.65	3 ³ / ₄	95.3
1 1/2x3/4	38.1x1.65	19.05x1.65	3 ³ / ₈	85.7
1 1/2x1	38.1x1.65	25.4x1.65	3 ³ / ₈	85.7
2x1	50.8x1.65	25.4x1.65	3 ³ / ₈	85.7
2x1 1/2	50.8x1.65	38.1x1.65	3 ³ / ₈	85.7
2 1/2x1 1/2	63.5x1.65	38.1x1.65	3 ³ / ₈	85.7
2 1/2x2	63.5x1.65	50.8x1.65	3 ³ / ₈	85.7
3x1 1/2	76.2x1.65	38.1x1.65	4 ⁵ / ₈	117.5
3x2	76.2x1.65	50.8x1.65	4 ⁵ / ₈	117.5
3x2 1/2	76.2x1.65	63.5x1.65	4 ⁵ / ₈	117.5
4x2	101.6x2.11	50.8x1.65	4 ³ / ₄	120.7
4x2 1/2	101.6x2.11	63.5x1.65	4 ³ / ₄	120.7
4x3	101.6x2.11	76.2x1.65	4 ³ / ₄	120.7
6x3	152.4x2.80	76.2x1.65	10 ³ / ₈	263.5
6x4	152.4x2.80	101.6x2.11	10 1/2	266.7

Reducing Cross Tee Ferrule Ends



Size Inch	D1xT1 mmxmm	D2xT2 mmxmm	A		B	
			Inch	mm	Inch	mm
3/4x1/2	19.05x1.65	12.7x1.65	2 ⁵ / ₁₆	66.7	2 ⁵ / ₁₆	66.7
1x1/2	25.4x1.65	12.7x1.65	2 ⁵ / ₁₆	66.7	2 ⁵ / ₁₆	66.7
1x3/4	25.4x1.65	19.05x1.65	2 ⁵ / ₁₆	66.7	2 ⁵ / ₁₆	66.7
1 1/2x1/2	38.1x1.65	12.7x1.65	2 ⁷ / ₁₆	73	2 ⁷ / ₁₆	73
1 1/2x3/4	38.1x1.65	19.05x1.65	2 ⁷ / ₁₆	73	2 ⁷ / ₁₆	73
1 1/2x1	38.1x1.65	25.4x1.65	2 ⁷ / ₁₆	54.8	1 ⁷ / ₈	47.6
2x1/2	50.8x1.65	12.7x1.65	2 ⁹ / ₁₆	65.1	2 ¹ / ₈	54
2x3/4	50.8x1.65	19.05x1.65	2 ⁹ / ₁₆	65.1	2 ¹ / ₈	54
2x1	50.8x1.65	25.4x1.65	2 ⁹ / ₁₆	65.1	2 ¹ / ₈	54
2x1 1/2	50.8x1.65	38.1x1.65	2 ⁹ / ₁₆	65.1	2 ¹³ / ₃₂	61.1
2 1/2x1/2	63.5x1.65	12.7x1.65	2 ²⁷ / ₃₂	72.2	2 ³ / ₈	60.3
2 1/2x3/4	63.5x1.65	19.05x1.65	2 ²⁷ / ₃₂	72.2	2 ³ / ₈	60.3
2 1/2x1	63.5x1.65	25.4x1.65	2 ²⁷ / ₃₂	72.2	2 ³ / ₈	60.3
2 1/2x1 1/2	63.5x1.65	38.1x1.65	2 ²⁷ / ₃₂	72.2	2 ²¹ / ₃₂	67.5
2 1/2x2	63.5x1.65	50.8x1.65	2 ²⁷ / ₃₂	72.2	2 ¹³ / ₁₆	71.4
3x3/4	76.2x1.65	19.05x1.65	3 ³ / ₃₂	78.6	2 ⁵ / ₈	66.7
3x1	76.2x1.65	25.4x1.65	3 ³ / ₃₂	78.6	2 ⁵ / ₈	66.7
3x1 1/2	76.2x1.65	38.1x1.65	3 ³ / ₃₂	78.6	2 ²⁹ / ₃₂	73.8
3x2	76.2x1.65	50.8x1.65	3 ³ / ₃₂	78.6	3 ¹ / ₁₆	77.8
3x2 1/2	76.2x1.65	63.5x1.65	3 ³ / ₃₂	78.6	3 ³ / ₃₂	78.6
4x1	101.6x2.11	25.4x1.65	4 ¹ / ₁₆	103.2	3 ¹ / ₈	79.4
4x1 1/2	101.6x2.11	38.1x1.65	4 ¹ / ₁₆	103.2	3 ¹³ / ₃₂	86.5
4x2	101.6x2.11	50.8x1.65	4 ¹ / ₁₆	103.2	3 ¹⁹ / ₃₂	91.3
4x2 1/2	101.6x2.11	63.5x1.65	4 ¹ / ₁₆	103.2	3 ¹⁹ / ₃₂	91.3
4x3	101.6x2.11	76.2x1.65	4 ¹ / ₁₆	103.2	3 ¹⁹ / ₃₂	91.3
6x3	152.4x2.80	76.2x1.65	5 ⁷ / ₈	149.2	5 ¹ / ₄	133.4
6x4	152.4x2.80	101.6x2.11	5 ⁷ / ₈	149.2	5 ¹ / ₂	139.7

Reducer Eccentric Ferrule Ends



Size Inch	D1xT1 mmxmm	D2xT2 mmxmm	L	
			Inch	mm
3/4x1/2	19.05x1.65	12.7x1.65	2	50.8
1x1/2	25.4x1.65	12.7x1.65	3	76.2
1x3/4	25.4x1.65	19.05x1.65	2	50.8
1 1/2x1/2	38.1x1.65	12.7x1.65	5	127
1 1/2x3/4	38.1x1.65	19.05x1.65	4	101.6
1 1/2x1	38.1x1.65	25.4x1.65	3	76.2
2x1	50.8x1.65	25.4x1.65	5	127
2x1 1/2	50.8x1.65	38.1x1.65	3	76.2
2 1/2x1 1/2	63.5x1.65	38.1x1.65	5	127
2 1/2x2	63.5x1.65	50.8x1.65	3	76.2
3x1 1/2	76.2x1.65	38.1x1.65	7	177.8
3x2	76.2x1.65	50.8x1.65	5	127
3x2 1/2	76.2x1.65	63.5x1.65	3	76.2
4x2	101.6x2.11	50.8x1.65	9 ¹ / ₈	231.8
4x2 1/2	101.6x2.11	63.5x1.65	7 ¹ / ₈	181
4x3	101.6x2.11	76.2x1.65	5 ¹ / ₈	130.2
6x3	152.4x2.80	76.2x1.65	10 ³ / ₈	263.5
6x4	152.4x2.80	101.6x2.11	10 ¹ / ₂	266.7