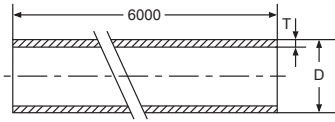




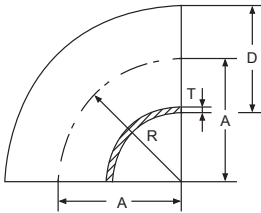
Tube

ISO 2037



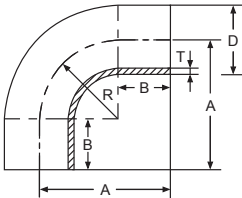
Size	DxT
1 ^s	25x1.2
1.5 ^s	38x1.2
2 ^s	51x1.2
2.5 ^s	63.5x1.6
3 ^s	76.1x1.6
4 ^s	101.6x2.0

90°Elbow Short(R=1.5D)



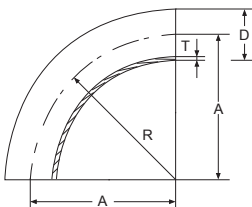
Size	DxT	A	R
1 ^s	25x1.2	37.5	37.5
1.5 ^s	38x1.2	57.0	57.0
2 ^s	51x1.2	76.5	76.5
2.5 ^s	63.5x1.6	95.3	95.3
3 ^s	76.1x1.6	114.2	114.2
4 ^s	101.6x2.0	152.4	152.4

90°Elbow Long(R=1.5D)



Size	DxT	A	B	R
1 ^s	25x1.2	65	27.5	37.5
1.5 ^s	38x1.2	85	28	57.0
2 ^s	51x1.2	110	33.5	76.5
2.5 ^s	63.5x1.6	135	39.7	95.3
3 ^s	76.1x1.6	155	40.8	114.2
4 ^s	101.6x2.0	195	42.6	152.4

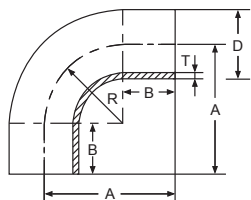
90°Elbow Long(R=3D)



Size	DxT	A	R
1.5 ^s	38x1.2	114	114
2 ^s	51x1.2	153	153
2.5 ^s	63.5x1.6	190.5	190.5
3 ^s	76.1x1.6	228.3	228.3
4 ^s	101.6x2.0	304.8	304.8

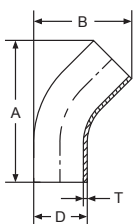
90° Elbow Long (R=1D)

ISO 2037



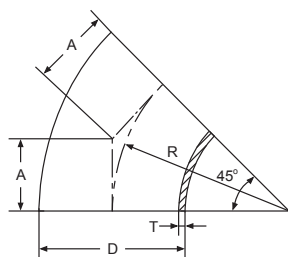
Size	DxT	A	B	R
1 ^s	25x1.2	55	30	25
1.5 ^s	38x1.2	70	32	38
2 ^s	51x1.2	82	31	51
2.5 ^s	63.5x1.6	105	41.5	63.5
3 ^s	76.1x1.6	110	34	76
4 ^s	101.6x2.0	150		149

45° Elbow Long



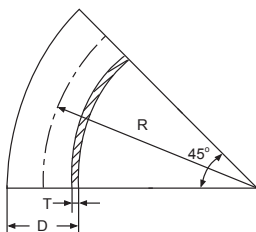
Size	DxT	A	B
1 ^s	25x1.2	70	47
1.5 ^s	38x1.2	87	63
2 ^s	51x1.2	119.5	86.5
2.5 ^s	63.5x1.6	136	101
3 ^s	76.1x1.6	157	119
4 ^s	101.6x2.0	226.5	166

45° Elbow Short (R=1.5D)



Size	DxT	A	R
1 ^s	25x1.2	15.5	37.5
1.5 ^s	38x1.2	23.6	57.0
2 ^s	51x1.2	31.7	76.5
2.5 ^s	63.5x1.6	39.5	95.3
3 ^s	76.1x1.6	47.3	114.2
4 ^s	101.6x2.0	63.1	152.4

45° Elbow Short (R=3D)



Size	DxT	R
1.5 ^s	38x1.2	114
2 ^s	51x1.2	153
2.5 ^s	63.5x1.6	190.5
3 ^s	76.1x1.6	228.3
4 ^s	101.6x2.0	304.8