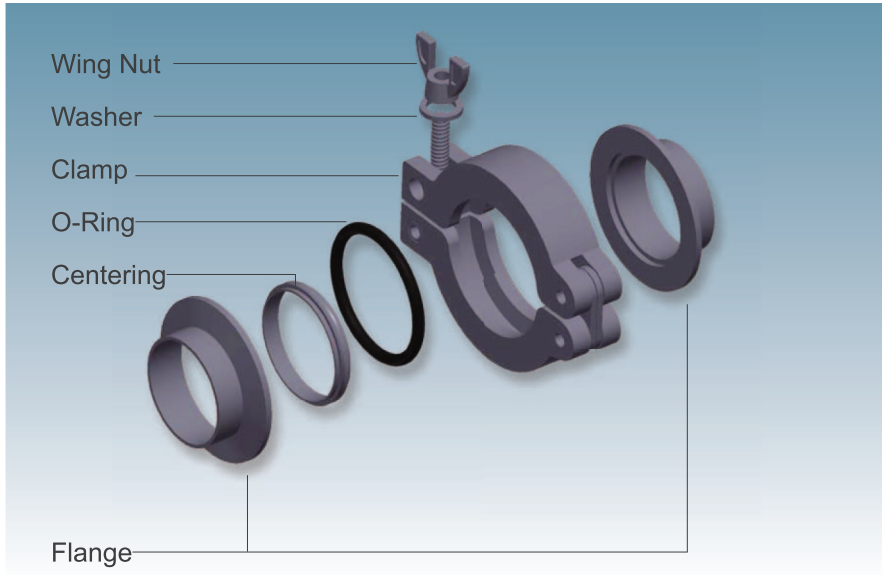


KF FLANGES CONNECTION WITH CLAMPS



Characteristic:

Easy assembly and quick disassembly manually without tools-KF or NW assembly comprises two flanges,a center-ring,an O-ring and an aluminum clamp or stainless steel clamp with a wingnut fastener for quick and fast connection.

Uniform pressure to effect vacuum seal connection-15° taper surface of KF/NW flange allows uniform pressure to compress an O-Ring,which is held in place by metal center-ring,by the clamp to generate a vacuum seal.

Material and size:

Flanges,blanks,fitting:Material S.S.304

Clamps:Material Aluminum or S.S.304

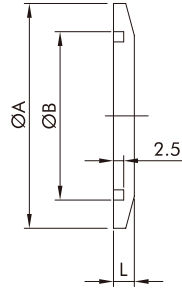
O-Ring:Material Viton

Size:KF10-KF160,JIS standard:NW10-NW100

Material S.S.304,304L,316L and size can be customized per customers' design and requirement.

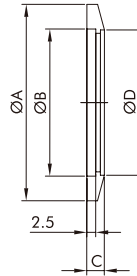
KF Blank Flange

KF Flange Series



Size	A	B	L
KF10	30	12.2	5.1
KF16	30	17.2	5.1
KF25	40	26.2	5.1
KF40	55	41.2	5.1
KF50	75	52.2	5.1
KF63	87	70.0	5.1
KF80	114	83.0	11.0
KF100	134	102.0	11.0
KF160	190	153.0	11.0

KF Bored Blank Flange

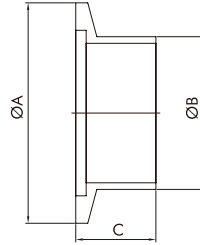


Size	A	B	C	D
KF10	30	12.2	5.1	12.9
KF16	30	17.2	5.1	19.3
KF25	40	26.2	5.1	25.7
KF40	55	41.2	5.1	38.4
KF50	75	52.2	5.1	51.0
KF63	87	70.0	5.1	63.7
KF80	114	83.0	11.0	76.4
KF100	134	102.0	11.0	101.8
KF160	190	153.0	11.0	152.9

Material S.S.304,304L,316L and size can be customized per customers' design and requirement.

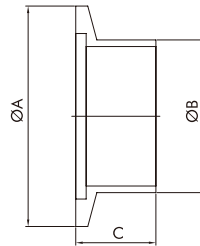
KF Short Weld Stub Flange

KF Flange Series



Size	Standard	A	B	C
KF10	U.S.A	30	12.7	12.70
KF16	U.S.A	30	19.1	12.70
KF25	U.S.A	40	25.4	12.70
KF40	U.S.A	55	38.1	19.10
KF50	U.S.A	75	50.8	19.10

KF Short Weld Stub Flange (Europe)

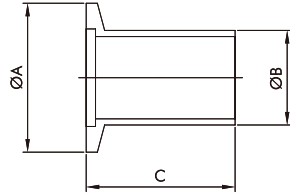


Size	Standard	A	B	C
KF10	Europe	30	14	30
KF16	Europe	30	20	30
KF25	Europe	40	28	30
KF40	Europe	55	45	30
KF50	Europe	75	57	30

Material S.S.304,304L,316L and size can be customized per customers' design and requirement.

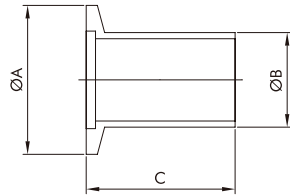
KF Long Weld Stub Flange

KF Flange Series



Size	Standard	A	B	C
KF10	U.S.A	30	12.7	40
KF16	U.S.A	30	19.1	40
KF25	U.S.A	40	25.4	40
KF40	U.S.A	55	38.1	40
KF50	U.S.A	75	50.8	40

KF Long Weld Stub (Europe) Flange

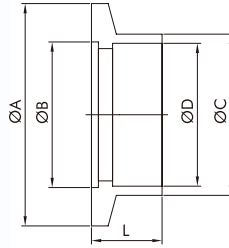


Size	Standard	A	B	C
KF10	Europe	30	14	70
KF16	Europe	30	20	70
KF25	Europe	40	28	70
KF40	Europe	55	45	70
KF50	Europe	75	57	70

Material S.S.304,304L,316L and size can be customized per customers' design and requirement.

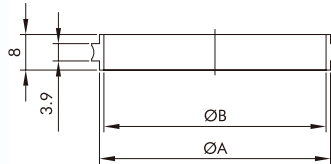
KF Socket Weld Flange

KF Flange Series



Size	A	B	C	D	L
KF10	30	12.2	16.5	13	12.7
KF16	30	17.1	22.1	19.3	12.7
KF25	40	26.3	28.7	25.7	12.7
KF40	55	41.3	44.5	38.4	12.7
KF50	75	52.3	57.2	51.6	12.7
KF63	87	70.0	67.5	63.7	12.7

KF Center Ring

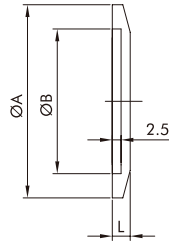


Size	A	B
NW10	12	10
NW16	17	16
NW25	26	25
NW40	41	40
NW50	52	50
NW63	69.6	67.5
NW80	82.5	79.8
NW100	101.6	100

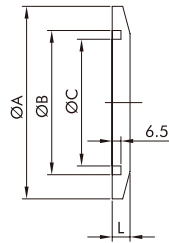
Material S.S.304,304L,316L and size can be customized per customers' design and requirement.

NW Blank Flange (JIS Type)

KF Flange Series



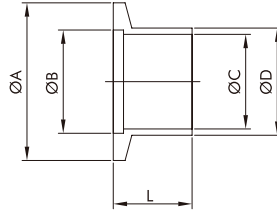
Size	A	B	L
NW10	30	12.2	5
NW16	30	17.2	5
NW25	40	26.2	5
NW40	55	41.2	5
NW50	75	52.2	5
NW63	87	70.2	5



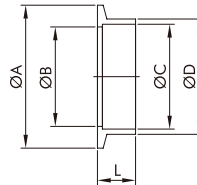
Size	A	B	C	L
NW80	114	83	73	11
NW100	134	102	92	11

Material S.S.304,304L,316L and size can be customized per customers' design and requirement.

NW Short Weld Stub Flange (JIS Type) KF Flange Series



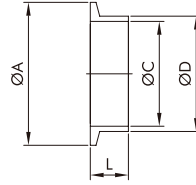
Size	A	B	C	D	L
NW10	30	12.2	10	13.8	10
NW16	30	17.2	16	20.0	10
NW10	30	12.2	10	13.8	20
NW16	30	17.2	16	20.0	20
NW25	40	26.2	24	27.2	20
NW40	55	41.2	39	42.7	20



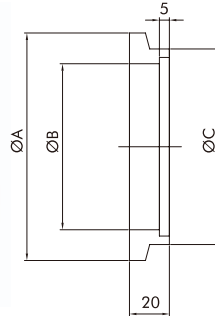
Size	A	B	C	D	L
NW50	75	52.2	55	60.5	20

Material S.S.304,304L,316L and size can be customized per customers' design and requirement.

NW Short Weld Stub Flange (JIS Type) KF Flange Series



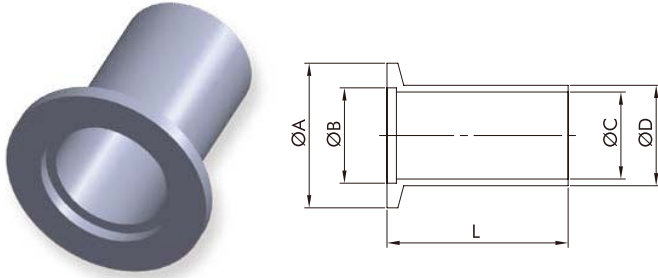
Size	A	B	C	D	L
NW63	87	-	70.2	76.3	20



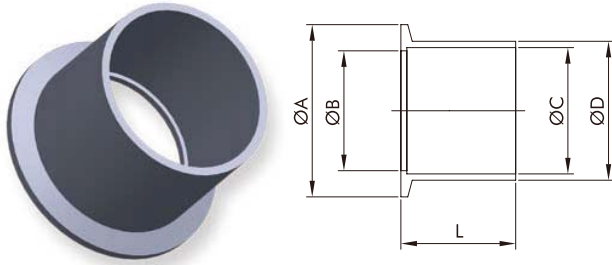
Size	A	B	C	D
NW80	114	83.3	98	20
NW100	134	102	118	20

Material S.S.304,304L,316L and size can be customized per customers' design and requirement.

NW Long Weld Stub Flange (JIS Type) KF Flange Series



Size	A	B	C	D	L
NW10	30	12.2	10	13.8	50
NW16	30	17.2	16	20.0	50
NW25	40	26.2	24	27.2	50
NW40	55	41.2	39	42.7	50

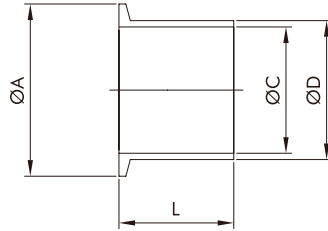


Size	A	B	C	D	L
NW50	75	52.2	55	60.5	50

Material S.S.304,304L,316L and size can be customized per customers' design and requirement.

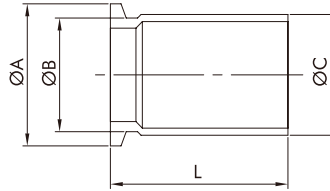
NW Long Weld Stub Flange (JIS Type)

KF Flange Series



Size	A	B	C	D	L
NW63	87	-	70.2	76.3	50

NW Long Weld Stub Flange(JIS Type Special Size)

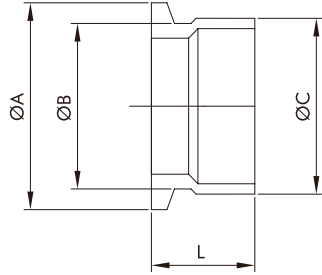


Size	A	B	C	D
NW25	40	32	34	50
NW40	55	45	48.6	50

Material S.S.304,304L,316L and size can be customized per customers' design and requirement.

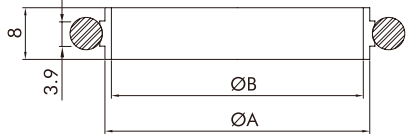
NW Short Weld Stub Flange (JIS Type Special Size)

KF Flange Series



Size	A	B	C	L
NW25	40	32	34	20
NW40	55	45	48.6	20

NW Center Ring + O-Ring (JIS Type)

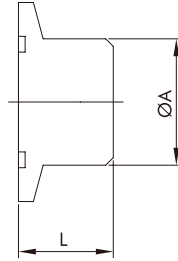


Size	A	B
NW10	12	10
NW16	17	16
NW25	26	25
NW40	41	40
NW50	52	50
NW63	70	68
NW80	83	81
NW100	102	100

Material S.S.304,304L,316L and size can be customized per customers' design and requirement.

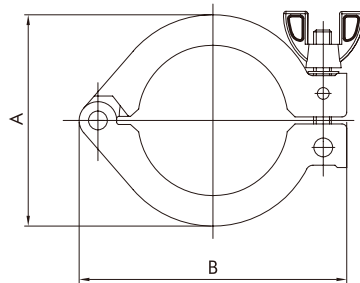
KF Blank Stubs Flange

KF Flange Series



Size	A	L
KF10	19.05	19.05
KF16	19.05	19.05
KF25	25.4	19.05
KF40	38.1	25.4
KF50	50.8	25.4

KF Single Pin Clamp

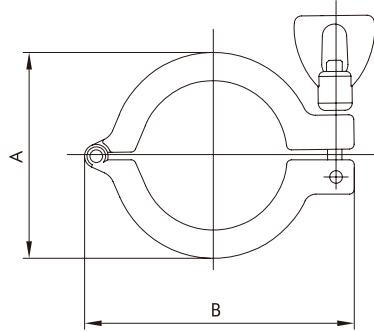


Size	Material	A	B
KF16	Aluminum	42.5	63
KF25	Aluminum	54	72
KF40	Aluminum	70	90
KF50	Aluminum	90	114

Material S.S.304,304L,316L and size can be customized per customers' design and requirement.

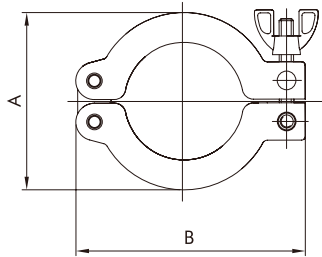
KF Single Pin Clamp

KF Flange Series



Size	Material	A	B
KF16	304S.S	42.5	63
KF25	304S.S	54	72
KF40	304S.S	70	90
KF50	304S.S	90	114

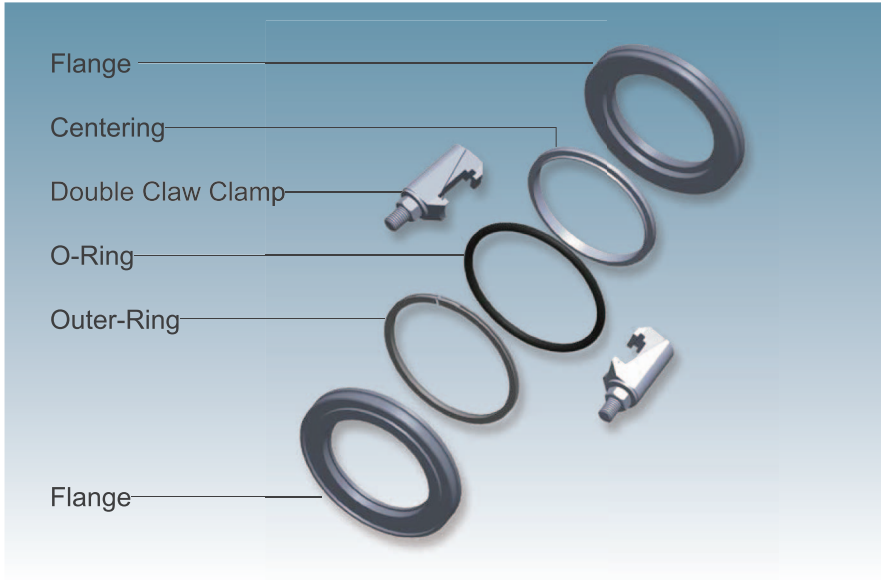
KF Double Pin Clamp



Size	Material	A	B
KF10	Aluminum+Ni-plated	45	61
KF16	Aluminum+Ni-plated	45	61
KF25	Aluminum+Ni-plated	55	72
KF40	Aluminum+Ni-plated	70	90
KF50	Aluminum+Ni-plated	95	123

Material S.S.304,304L,316L and size can be customized per customers' design and requirement.

ISO FLANGES CONNECTION WITH CLAMPS



Characteristic:

ISO Flange series are in accordance with international standard operation standard, which are compatible to other maker's standard.

ISO Flange assembly:

- ISO Clamp type-comprises two ISO flanges, a center ring with O-ring, and a double wall clamp or a double claw clamp.
- ISO bolt type-comprises two ISO bolted flanges, a center ring with O-ring, bolt screws, washer and nuts.

Material and size:

Flanges, blanks, fitting: Material S.S.304

Clamps: Material Aluminum or S.S.304

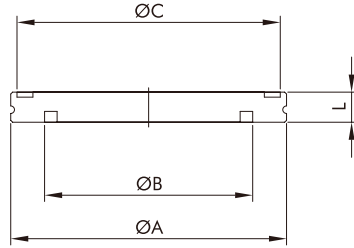
O-Ring: Material Viton

Size: ISO63~ISO160

Material S.S.304,304L,316L and size can be customized per customers' design and requirement.

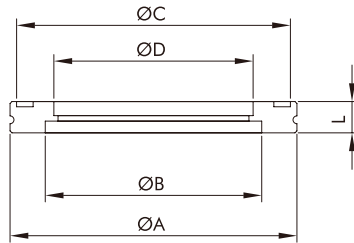
ISO Blank Flange

ISO Flange Series



Size	A	B	C	L
ISO63	95	70	90	12
ISO80	110	83	105	12
ISO100	130	102	125	12
ISO160	180	153	175	12

ISO Bored Blank Flange

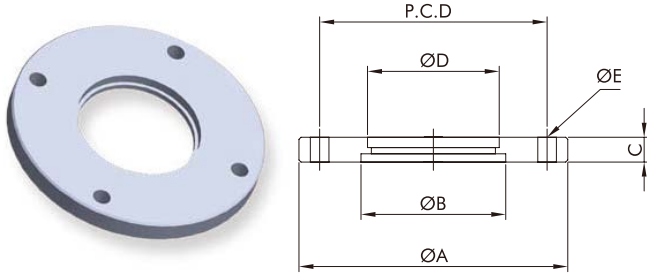


Size	A	B	C	D	L
ISO63	95	70	90	63.7	12
ISO80	110	83	105	76.4	12
ISO100	130	102	125	101.8	12
ISO160	180	153	175	152.9	12

Material S.S.304,304L,316L and size can be customized per customers' design and requirement.

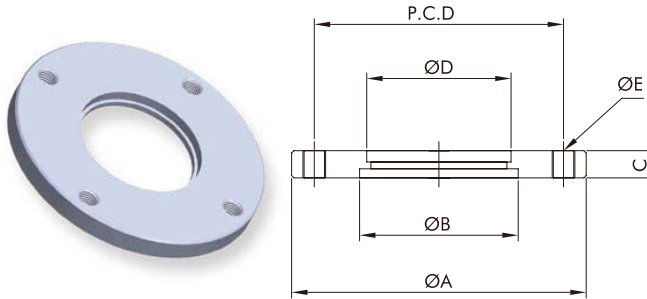
ISO Bored Blank Bolted Flange

ISO Flange Series



Size	A	B	C	D	E	P.C.D
ISO63	130	70	12	63.7	9*4	110
ISO80	145	83	12	76.4	9*8	125
ISO100	165	102	12	101.8	9*8	145
ISO160	225	153	16	152.9	11*8	200

ISO Bored Blank Bolted Flange-Tapped

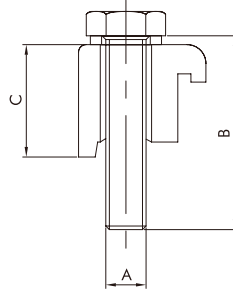


Size	A	B	C	D	E	P.C.D
ISO63	130	70	12	63.7	M8*4	110
ISO80	145	83	12	76.4	M8*8	125
ISO100	165	102	12	101.8	M8*8	145
ISO160	225	153	16	152.9	M10*8	200

Material S.S.304,304L,316L and size can be customized per customers' design and requirement.

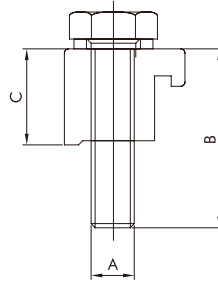
ISO Single Wall Clamp

ISO Flange Series



Size	Material	A	B	C
ISO63-100	Aluminum	M8	35	23.5
ISO160-250	Aluminum	M10	35	23.5
ISO320-500	Aluminum	M12	50	30

ISO Single Wall Clamp

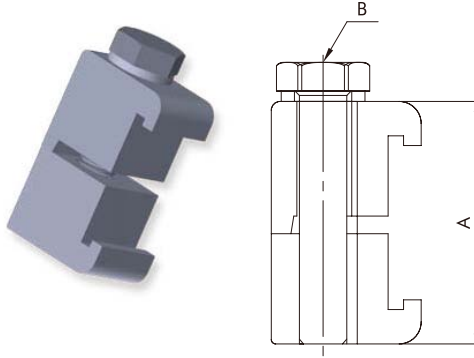


Size	Material	A	B	C
ISO63-100	304S.S	M8	35	23
ISO160-250	304S.S	M10	35	23
ISO320-500	304S.S	M12	50	30
ISO63-100	Steel+Zn Plated	M8	35	23
ISO160-250	Steel+Zn Plated	M10	35	23
ISO320-500	Steel+Zn Plated	M12	50	30

Material S.S.304,304L,316L and size can be customized per customers' design and requirement.

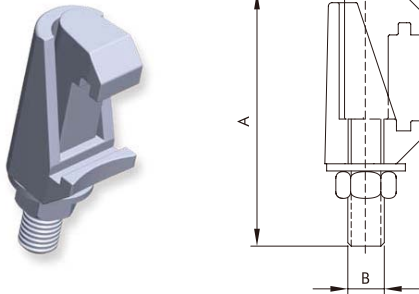
ISO Double Wall Clamp

ISO Flange Series



Size	Material	A	B
ISO63-100	Aluminum	45	M8
ISO160-250	Aluminum	45	M10
ISO320-500	Aluminum	60	M12

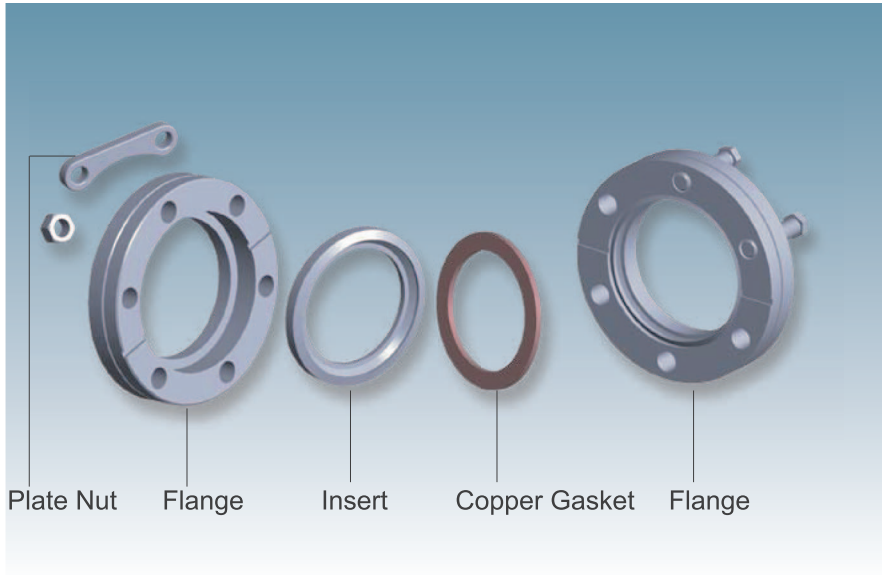
ISO Double Wall Clamp



Size	Material	A	B
ISO63-250D	304S.S	61.5	M10
ISO320-500D	304S.S	76	M12
ISO63-250D	Steel+Zn Plated	61.5	M10
ISO320-500D	Steel+Zn Plated	76	M12

Material S.S.304,304L,316L and size can be customized per customers' design and requirement.

CF FLANGE CONNECTION WITH BOLTS AND NUTS



Characteristic:

CF Flange assembly comprises two CF flanges, a flat copper gasket, insert, bolts and nuts.

CF flange design option:

- CF Flange blank or CF bored flange blank
- CF Tapped hole flange or untapped hole flange
- CF Nonrotatable flange or rotatable flange

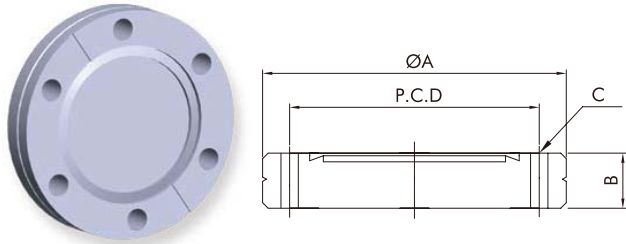
Material and size:

Flanges, blanks, fitting: Material S.S.304
Gasket: Material Copper
Size: CF16~CF150

Material S.S.304,304L,316L and size can be customized per customers' design and requirement.

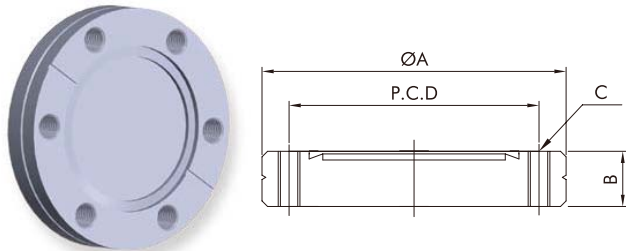
CF Blank Flange

CF Flange Series



Size	A	B	C*No	P.C.D
CF16	33.8	7.5	4.4*6	26.9
CF35	69.5	12.7	6.7*6	58.7
CF63	113.6	18	8.4*8	92.1
CF100	151.6	20	8.4*16	130.3
CF150	202.5	22	8.4*20	181

CF Blank Tapped Flange

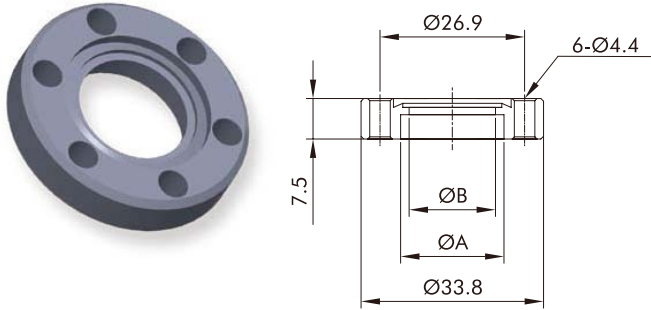


Size	A	B	C*No	P.C.D
CF16	33.8	7.5	M4*6	26.9
CF35	69.5	12.7	M6*6	58.7
CF63	113.6	18	M8*8	92.1
CF100	151.6	20	M8*16	130.3
CF150	202.5	22	M8*20	181

Material S.S.304,304L,316L and size can be customized per customers' design and requirement.

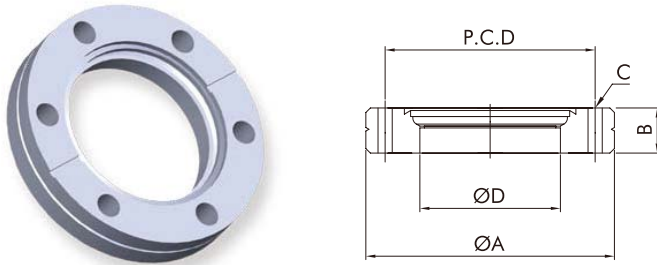
CF Bored Blank Flange

CF Flange Series



Size	A	B
CF16-06	6.5	5.5
CF16-12	12.9	10.4
CF16-19	19.15	16

CF Bored Blank Flange

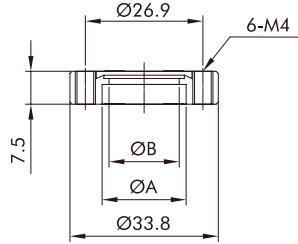


Size	A	B	C*No	D	P.C.D
CF35-25	69.5	12.7	6.7*6	25.6	58.7
CF35-38	69.5	12.7	6.7*6	38.3	58.7
CF35-41	69.5	12.7	6.7*6	41.3	58.7
CF63-51	113.6	18	8.4*8	51.1	92.1
CF63-63	113.6	18	8.4*8	63.7	92.1
CF100-100	151.6	20	8.4*16	101.8	130.3

Material S.S.304,304L,316L and size can be customized per customers' design and requirement.

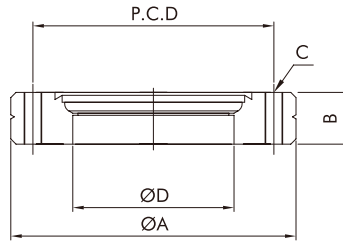
CF Bored Blank Tapped Flange

CF Flange Series



Size	A	B
CF16-06	6.5	5.5
CF16-12	12.9	10.4
CF16-19	19.15	16

CF Bored Blank Tapped Flange

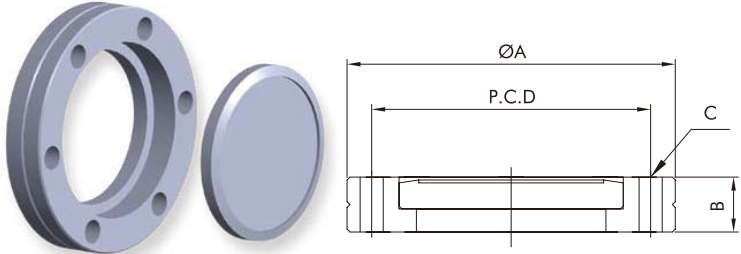


Size	A	B	C*No	D	P.C.D
CF35-25	69.5	12.7	M6*6	25.6	58.7
CF35-38	69.5	12.7	M6*6	38.3	58.7
CF35-41	69.5	12.7	M6*6	41.3	58.7
CF63-51	113.6	18	M8*8	51.1	92.1
CF63-63	113.6	18	M8*8	63.7	92.1
CF100-100	151.6	20	M8*16	101.8	130.3

Material S.S.304,304L,316L and size can be customized per customers' design and requirement.

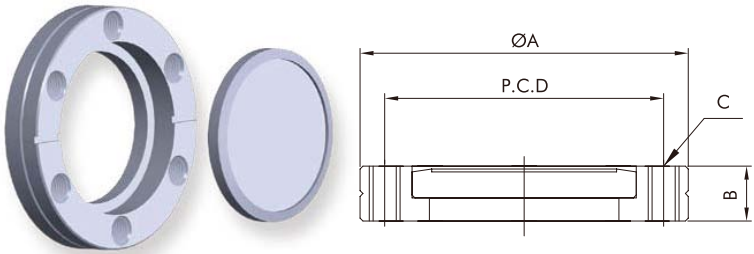
CF Rotatable Blank Flange

CF Flange Series



Size	A	B	C*No	P.C.D
CF16	33.8	7.5	4.4*6	26.9
CF35	69.5	12.7	6.7*6	58.7
CF63	113.6	19	8.4*8	92.1
CF100	151.6	21.5	8.4*16	130.3
CF150	202.5	24	8.4*20	181

CF Rotatable Blank Tapped Flange

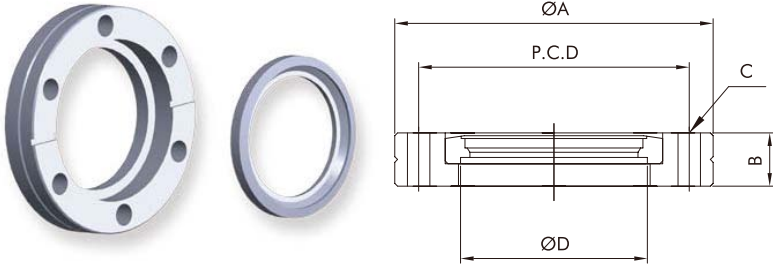


Size	A	B	C*No	P.C.D
CF16	33.8	7.5	M4*6	26.9
CF35	69.5	12.7	M6*6	58.7
CF63	113.6	19	M8*8	92.1
CF100	151.6	21.5	M8*16	130.3
CF150	202.5	24	M8*20	181

Material S.S.304,304L,316L and size can be customized per customers' design and requirement.

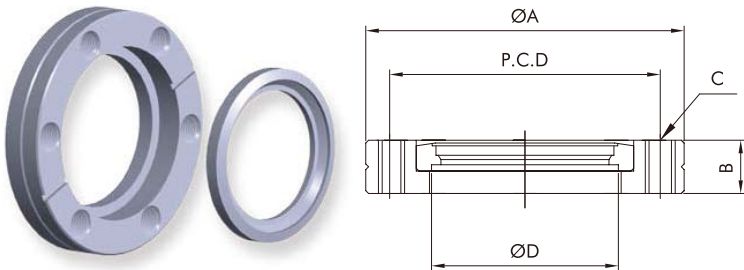
CF Rotatable Bored Blank Flange

CF Flange Series



Size	A	B	C*No	D	P.C.D
CF35-25	69.5	12.7	6.7*6	25.6	58.7
CF35-38	69.5	12.7	6.7*6	38.3	58.7
CF35-42	69.5	12.7	6.7*6	42.9	58.7
CF63-51	113.6	19.0	8.4*8	51.1	92.1
CF63-63	113.6	19.0	8.4*8	63.7	92.1
CF100-102	151.6	21.5	8.4*16	101.8	130.3
CF150-153	202.5	24.0	8.4*20	153.1	181.0

CF Rotatable Bored Blank Tapped Flange

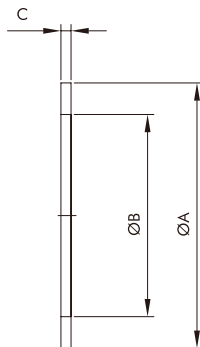


Size	A	B	C*No	D	P.C.D
CF35-25	69.5	12.7	M6*6	25.6	58.7
CF35-38	69.5	12.7	M6*6	38.3	58.7
CF35-42	69.5	12.7	M6*6	42.9	58.7
CF63-51	113.6	19.0	M8*8	51.1	92.1
CF63-63	113.6	19.0	M8*8	63.7	92.1
CF100-102	151.6	21.5	M8*16	101.8	130.3
CF150-153	202.5	24.0	M8*20	153.1	181.0

Material S.S.304,304L,316L and size can be customized per customers' design and requirement.

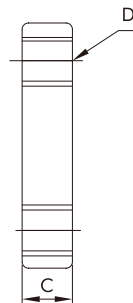
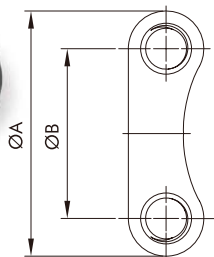
CF-Copper Gasket

CF Flange Series



Size	A	B	C
CF16	21	16	2
CF35	48	37	2
CF63	82	63	2
CF100	120	101	2
CF150	171	152	2
CF200	222	203	2
CF250	294	269	2

CF-Plate Nut

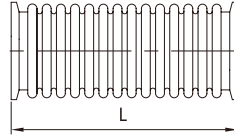


Size	A	B	C	D
CF16PN	19.5	13.5	4	M4
CF35PN	39.5	29.5	6	M6
CF63PN	50.2	35.2	8	M8

Material S.S.304,304L,316L and size can be customized per customers' design and requirement.

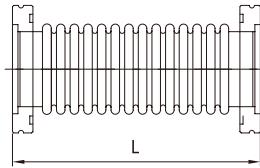
KF Compressible Bellow Connections

Bellows Series



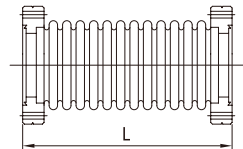
Size	L
KF16	Custom Made
KF25	Custom Made
KF40	Custom Made
KF50	Custom Made
KF63	Custom Made
KF80	Custom Made
KF100	Custom Made

ISO Compressible Bellow Connections



Size	L
ISO63	Custom Made
ISO80	Custom Made
ISO100	Custom Made

CF Compressible Bellow Connections



Size	L
CF16	Custom Made
CF25	Custom Made
CF40	Custom Made
CF63	Custom Made
CF80	Custom Made
CF100	Custom Made

Material S.S.304,304L,316L and size can be customized per customers' design and requirement.

Welded Bellow - Custom Made

Bellows Series



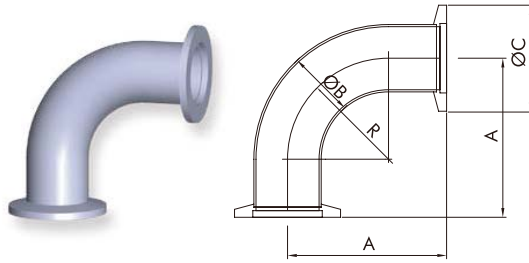
ITEM	DIAPHRAGM SIZE
1	OD19-8
2	OD26-12
3	OD26-15
4	OD31-17
5	OD33-21
6	OD34-14
7	OD36-24
8	OD38-26
9	OD38-16
10	OD40-20
11	OD42-19
12	OD44-19
13	OD44-26
14	OD46-32
15	OD48-25
16	OD48-35
17	OD49-36
18	OD50-32
19	OD51-31
20	OD51-36
21	OD51-38
22	OD53-37
23	OD54-40
24	OD55-35
25	OD55-42
26	OD55-43
27	OD58-46
28	OD60-40
29	OD62-49
30	OD76-51
31	OD82-57
32	OD84-71
33	OD85-59
34	OD89-65
35	OD100-68
36	OD108-81
37	OD126-100
38	OD130-108
39	OD149-130
40	OD150-109
41	OD184-152
42	OD187-174
43	OD208-180
44	OD270-210
45	OD350-220

Customized Welded Bellow For Vacuum, We can supply per customers' design

Material S.S.304,304L,316L and size can be customized per customers' design and requirement.

KF 90° Elbow

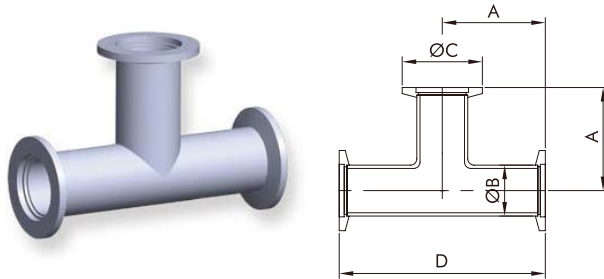
Fittings Series



Size	Standard	A	B	C	R
KF16	U.S.A	38.3	19.05	30	28.6
KF25	U.S.A	56.2	25.4	40	38.1
KF40	U.S.A	78.4	38.1	55	57.2
KF50	U.S.A	107	50.8	75	76.2

Size	Standard	A	B	C	R
KF16	Europe	40	19.05	30	28.6
KF25	Europe	50.8	25.4	40	38.1
KF40	Europe	65	38.1	55	57.2
KF50	Europe	80	50.8	75	76.2

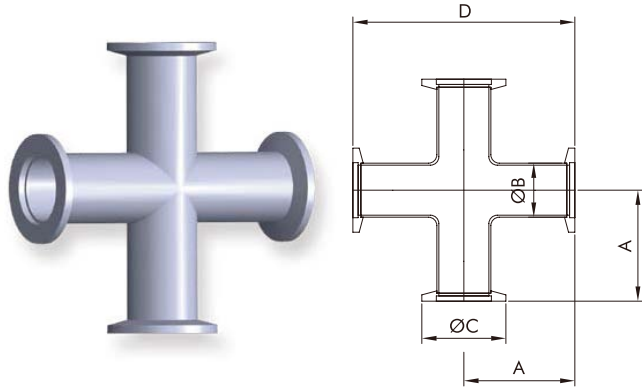
KF Tees



Size	Standard	A	B	C	R
KF16	U.S.A	38.3	19.05	30	76.6
KF25	U.S.A	51.4	25.4	40	102.8
KF40	U.S.A	61	38.1	55	122
KF50	U.S.A	80	50.8	75	160

Size	Standard	A	B	C	R
KF16	Europe	40	19.05	30	80
KF25	Europe	50	25.4	40	100
KF40	Europe	65	38.1	55	130
KF50	Europe	70	50.8	75	140

Material S.S.304,304L,316L and size can be customized per customers' design and requirement.



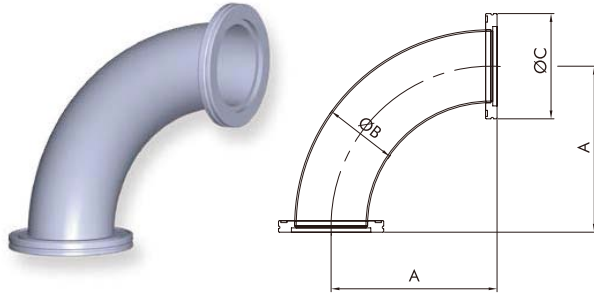
Size	Standard	A	B	C	D
KF16	U.S.A	38.3	19.05	30	76.6
KF25	U.S.A	51.4	25.4	40	102.8
KF40	U.S.A	61	38.1	55	122
KF50	U.S.A	80	50.8	75	160

Size	Standard	A	B	C	D
KF16	Europe	40	19.05	30	80
KF25	Europe	50	25.4	40	100
KF40	Europe	65	38.1	55	130
KF50	Europe	70	50.8	75	140

Material S.S.304,304L,316L and size can be customized per customers' design and requirement.

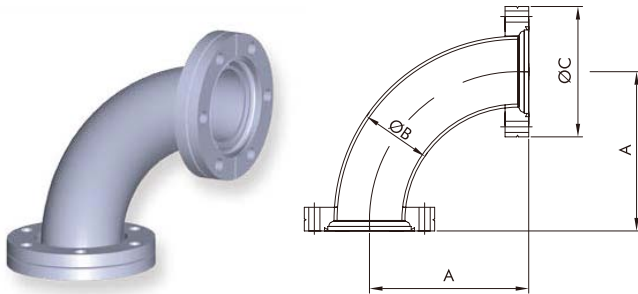
ISO 90° Elbow

Fittings Series



Size	A	B	C
ISO63	138.4	63.5	95
ISO80	166.9	76.2	110
ISO100	217.7	101.6	130
ISO160	235.2	152.4	180

CF 90° Elbow

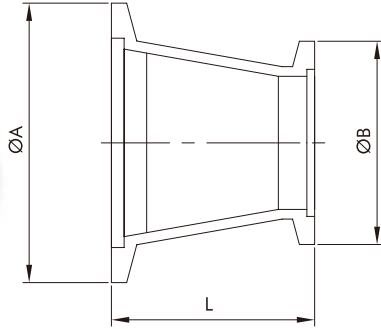


Size	A	B	C
CF16	37.5	19.05	33.8
CF35	79.9	38.1	69.5
CF63	141.3	63.5	113.6
CF100	222.2	101.6	151.6
CF150	241.3	152.4	202.5

Material S.S.304,304L,316L and size can be customized per customers' design and requirement.

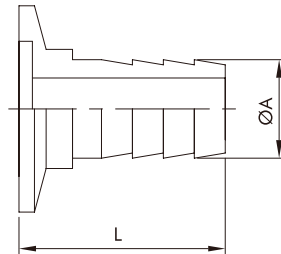
KF Concentric Reducing Adaptor

Adaptor Series



Size	A	B	L
KF25X16	40	30	40
KF40X16	55	30	40
KF40X25	55	40	40
KF50X16	75	30	40
KF50X25	75	40	40
KF50X40	75	55	40

KF Rubber Hose Adaptor

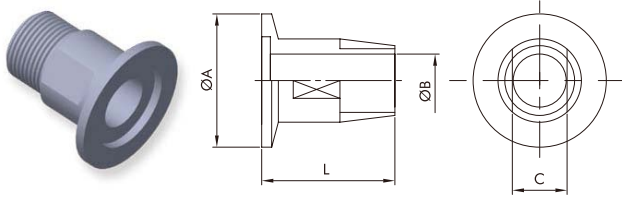


Size	A	L	Hose Size
KF10	16	40	5/8"
KF16	19.1	40	3/4"
KF25	22.2	40	7/8"
KF40	41.3	40	1-5/8"
KF50	47.7	40	1-7/8"

Material S.S.304,304L,316L and size can be customized per customers' design and requirement.

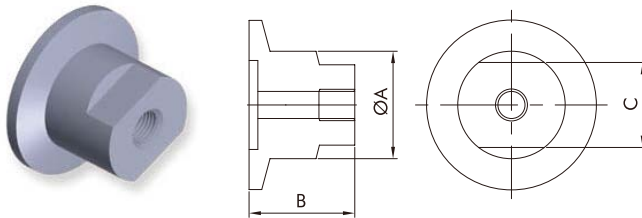
KF Male Pipe Adaptor

Adaptor Series



Size	A	B	C	L	Thread(PT)	Thread(NPT)
KF16	30	4.7	10	35	1/8"PT	1/8"NPT
KF16	30	7.1	14	35	1/4"PT	1/4"NPT
KF25	40	4.7	10	35	1/8"PT	1/8"NPT
KF25	40	7.1	14	35	1/4"PT	1/4"NPT
KF25	40	11.9	22	40	1/2"PT	1/2"NPT
KF25	40	15.9	27	40	3/4"PT	3/4"NPT
KF40	55	7.1	14	35	1/4"PT	1/4"NPT
KF40	55	11.9	22	40	1/2"PT	1/2"NPT
KF40	55	15.9	27	40	3/4"PT	3/4"NPT
KF40	55	22.2	36	45	1"PT	1"NPT
KF50	75	7.1	14	35	1/4"PT	1/4"NPT
KF50	75	11.9	22	40	1/2"PT	1/2"NPT
KF50	75	15.9	27	40	3/4"PT	3/4"NPT
KF50	75	22.2	36	45	1"PT	1"NPT

KF Female Pipe Adaptor



Size	A	B	C	Thread(PT)	Thread(NPT)
KF16	19.05	25	17	1/8"PT	1/8"NPT
KF25	25.4	25	19	1/8"PT	1/8"NPT
KF40	38.1	25	32	1/8"PT	1/8"NPT
KF50	50.8	25	46	1/8"PT	1/8"NPT
KF16	19.05	25	17	1/4"PT	1/4"NPT
KF25	25.4	25	19	1/4"PT	1/4"NPT
KF40	38.1	25	32	1/4"PT	1/4"NPT
KF50	50.8	25	46	1/4"PT	1/4"NPT

Material S.S.304,304L,316L and size can be customized per customers' design and requirement.