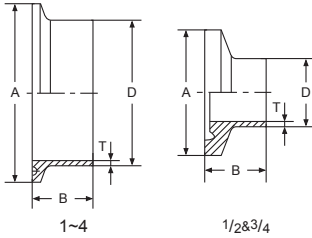
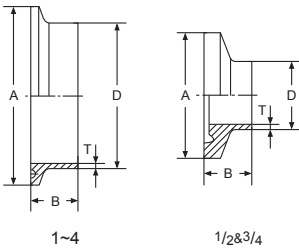


Ferrule(Long)



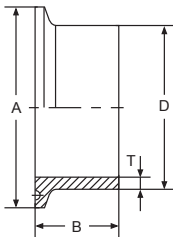
Size	DxT	A		B	
		Inch	mm	Inch	mm
1/2	12.7x1.65	1	25.2	1 1/8	28.6
3/4	19.05x1.65	1	25.2	1 1/8	28.6
1	25.4x1.65	1 63/64	50.4	1 1/8	28.6
1 1/2	38.1x1.65	1 63/64	50.4	1 1/8	28.6
2	50.8x1.65	2 33/64	63.9	1 1/8	28.6
2 1/2	63.5x1.65	3 3/64	77.5	1 1/8	28.6
3	76.2x1.65	3 37/64	90.9	1 1/8	28.6
4	101.6x2.11	4 11/16	118.9	1 1/8	28.6
6	152.4x2.80	6 9/16	166.7	1 1/2	38.1

Ferrule(Short)



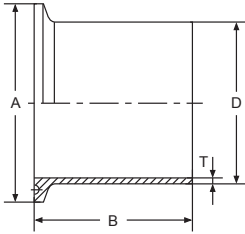
Size	DxT	A		B	
		Inch	mm	Inch	mm
1/2	12.7x1.65	1	25.2	1/2	12.7
3/4	19.05x1.65	1	25.2	1/2	12.7
1	25.4x1.65	1 63/64	50.4	1/2	12.7
1 1/2	38.1x1.65	1 63/64	50.4	1/2	12.7
2	50.8x1.65	2 33/64	63.9	1/2	12.7
2 1/2	63.5x1.65	3 3/64	77.5	1/2	12.7
3	76.2x1.65	3 37/64	90.9	1/2	12.7
4	101.6x2.11	4 11/16	118.9	5/8	15.9
6	152.4x2.80	6 9/16	166.7	3/4	19.05

Welding Ferrule(Thick)



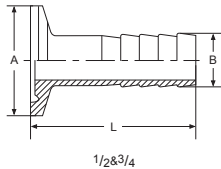
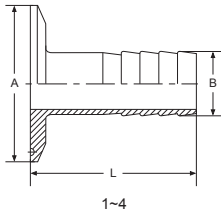
Size	D	T	A		B	
			Inch	mm	Inch	mm
1	29.5	3.68	1 63/64	50.4	1 5/8	41.3
1 1/2	42.6	3.89	1 63/64	50.4	1 5/8	41.3
2	55.7	4.09	2 33/64	63.9	1 3/4	44.5
2 1/2	68.8	4.29	2 3/64	77.5	1 3/4	44.5
3	81.9	4.50	3 37/64	90.9	1 13/16	46
4	108.1	5.36	4 11/16	118.9	2 1/8	54

Ferrule(Long)



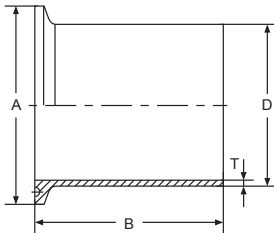
Size	DxT	A		B	
		Inch	mm	Inch	mm
1	25.4x1.65	1 ⁶³ / ₆₄	50.4	3	76.2
1½	38.1x1.65	1 ⁶³ / ₆₄	50.4	3	76.2
2	50.8x1.65	2 ²³ / ₆₄	63.9	3	76.2
2½	63.5x1.65	3 ³⁷ / ₆₄	77.5	3	76.2
3	76.2x1.65	3 ³⁷ / ₆₄	90.9	4	101.6
4	101.6x2.11	4 ¹¹ / ₁₆	118.9	4	101.6

Ferrule Hose Adapter



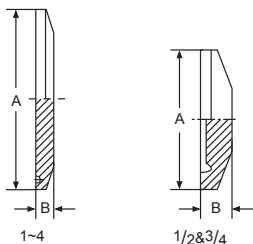
Size	A		B		L	
	Inch	mm	Inch	mm	Inch	mm
1/2x1/4	1	25.2	1/4	6.35	1½	38.1
1/2x3/8	1	25.2	3/8	9.5	1½	38.1
1/2	1	25.2	1/2	12.7	1½	38.1
3/4x1/4	1	25.2	1/4	6.35	1½	38.1
3/4x3/8	1	25.2	3/8	9.5	1½	38.1
3/4x1/2	1	25.2	1/2	12.7	1½	38.1
3/4	1	25.2	3/4	19.05	1½	38.1
1x1/2	1 ⁶³ / ₆₄	50.4	1/2	12.7	1½	38.1
1x3/4	1 ⁶³ / ₆₄	50.4	3/4	19.05	1½	38.1
1	1 ⁶³ / ₆₄	50.4	1	25.4	1 ¹¹ / ₁₆	42.9
1½x1/2	1 ⁶³ / ₆₄	50.4	1/2	12.7	1½	38.1
1½x3/4	1 ⁶³ / ₆₄	50.4	3/4	19.05	1½	38.1
1½x1	1 ⁶³ / ₆₄	50.4	1	25.4	1 ¹¹ / ₁₆	42.9
1½	1 ⁶³ / ₆₄	50.4	1½	38.1	1 ¹¹ / ₁₆	42.9
2	2 ²³ / ₆₄	63.9	2	50.8	2 ⁵ / ₁₆	58.7
2½	3 ³⁷ / ₆₄	77.5	2½	63.5	2 ¹¹ / ₃₂	59.5
3	3 ³⁷ / ₆₄	90.9	3	76.2	3 ³ / ₃₂	78.6
4	4 ¹¹ / ₁₆	118.9	4	101.6	3 ¹³ / ₃₂	86.5

Tank Long Ferrule Adapter



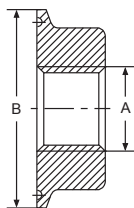
Size	DxT	A		B	
		Inch	mm	Inch	mm
1/2	12.7x1.65	1	25.2	1¾	44.5
¾	19.05x1.65	1	25.2	1¾	44.5
1	25.4x1.65	1 ⁶³ / ₆₄	50.4	4½	114.3
1½	38.1x1.65	1 ⁶³ / ₆₄	50.4	4½	114.3
2	50.8x1.65	2 ²³ / ₆₄	63.9	4½	114.3
2½	63.5x1.65	3 ³⁷ / ₆₄	77.5	4½	114.3
3	76.2x1.65	3 ³⁷ / ₆₄	90.9	4½	114.3
4	101.6x2.11	4 ¹¹ / ₁₆	118.9	4 ⁵ / ₈	117.5

Ferrule Cap



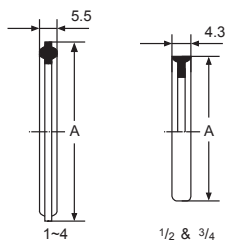
Size	A		B	
	Inch	mm	Inch	mm
1/2	1	25.4	2/11	4.7
3/4	1	25.4	2/11	4.7
1	1 ^{63/64}	50.4	1/4	6.35
1 1/2	1 ^{63/64}	50.4	1/4	6.35
2	2 ^{23/64}	63.9	1/4	6.35
2 1/2	3 ^{3/64}	77.5	1/4	6.35
3	3 ^{37/64}	90.9	1/4	6.35
4	4 ^{11/16}	118.9	1/4	6.35
6	6 ^{9/16}	166.7	3/7	11

Cap(Thermometer)



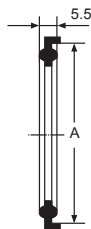
Size	A		B	
	Inch	mm	Inch	mm
1	1/2-14	G ^{1/2} "	1 ^{63/64}	50.4
1 1/2	3/4-14	G ^{3/4} "	1 ^{63/64}	50.4
2	3/4-14	G ^{3/4} "	2 ^{23/64}	63.9
2 1/2	3/4-14	G ^{3/4} "	3 ^{3/64}	77.5
3	3/4-14	G ^{3/4} "	3 ^{37/64}	90.9
4	3/4-14	G ^{3/4} "	4 ^{11/16}	118.9

Ferrule Gasket



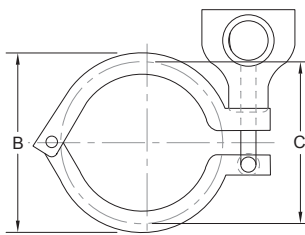
Size	A	
	Inch	mm
1/2	1	25.4
3/4	1	25.4
1	1 ^{63/64}	50.4
1 1/2	1 ^{63/64}	50.4
2	2 ^{23/64}	63.9
2 1/2	3 ^{3/64}	77.4
3	3 ^{37/64}	90.9
4	4 ^{11/16}	119.1

Ferrule Gasket(Flange Type)



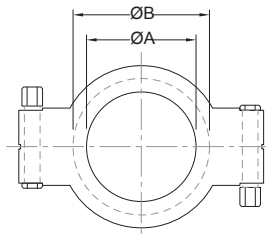
Size	A	
	Inch	mm
1 1/2	1 ^{63/64}	50.4
2	2 ^{23/64}	63.9
2 1/2	3 ^{3/64}	77.4
3	3 ^{37/64}	90.9
4	4 ^{11/16}	119.1

Clamp Ring



Size (Inch)	B	C
0.5"	38.0	28.3
0.75"	38.0	28.3
1.0"	63.8	54.0
1.5"	63.8	54.0
2.0"	77.4	67.1
2.5"	90.4	81.0
3.0"	103.6	94.5
3.5"	118.3	109.0
4.0"	132.6	122.4
5.0"	158.5	149.0
6.0"	185.0	175.1

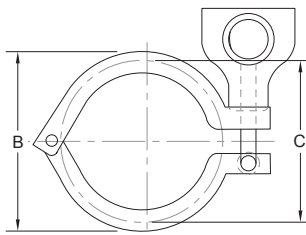
High Pressure Clamp Ring



Size (Inch/DIN)	A	B
0.5" / 0.75"	22.0	31.0
1.0" / 25	43.3	52.0
1.5" / 32 / 40	43.3	52.0
2.0" / 50	56.4	65.5
2.5"	69.5	79.0
3.0" / 65	77.6	92.5
3.5" / 80	100.0	112.0
4.0" / 100	108.9	120.5
5"	185.5	148.0
6"	158.0	170.0

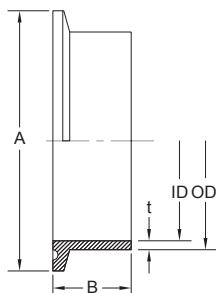
Clamp Ring

Clamp Union(DIN)



Size (DIN)	B	C
10	43.0	37.0
15	43.0	37.0
20	43.0	37.0
25	63.8	54.0
32	63.8	54.0
40	63.8	54.0
50	77.4	67.1
65	103.6	94.5
80	118.3	109.0
100	132.6	122.4
125	168.2	159.0
150	196.2	187.0
200	246.7	237.5
250	280.0	272.0
300	333.0	323.0

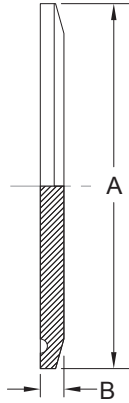
Ferrule



Size (DIN)	OD/ID/t	A	B1	B2	B3
10	13 / 10 x 1.5	34.0	12.7	21.5	28.6
15	19 / 16 x 1.5	34.0	12.7	21.5	28.6
20	23 / 20 x 1.5	34.0	12.7	21.5	28.6
25	29 / 26 x 1.5	50.5	12.7	21.5	28.6
32	35 / 32 x 1.5	50.5	12.7	21.5	28.6
40	41 / 38 x 1.5	50.5	12.7	21.5	28.6
50	53 / 50 x 1.5	64.0	12.7	21.5	28.6
65	70 / 66 x 2.0	91.0	12.7	21.5	28.6
80	85 / 81 x 2.0	106.0	15.9	21.5	28.6
100	104 / 100 x 2.0	119.0	15.9	28.6	38.1
125	129 / 125 x 2.0	155.0	21.5	28.6	38.1
150	154 / 150 x 2.0	183.0	21.5	28.6	38.1
200	204 / 200 x 2.0	233.5	21.5	28.6	38.1
250	254 / 250 x 2.0	268.5	21.5	28.6	38.1
300	306 / 300 x 3.0	319.3	21.5	28.6	38.1

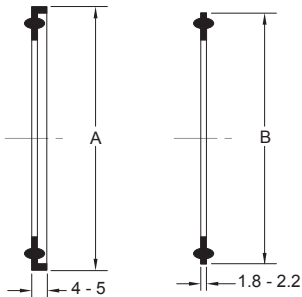
Ferrule Blank

Clamp Union(DIN)



Size (DIN)	A	B
10	34.0	5.5
15	34.0	5.5
20	34.0	5.5
25	50.5	6.4
32	50.5	6.4
40	50.5	6.4
50	64.0	6.4
65	91.0	6.4
80	106.0	6.4
100	119.0	7.9
125	155.0	10.0
150	183.0	11.1
200	233.5	11.1
250	268.5	11.1
300	319.3	11.1

Ferrule Gasket



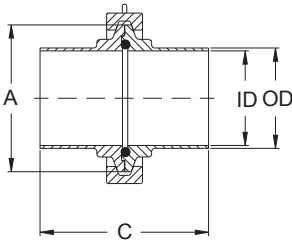
Flanged Type

Non Flanged Type

Size (DIN)	A	B
10	36.0	34.0
15	36.0	34.0
20	36.0	34.0
25	52.5	50.5
32	52.5	50.5
40	52.5	50.5
50	66.0	64.0
65	93.0	91.0
80	108.0	106.0
100	121.0	119.0
125	157.0	155.0
150	185.0	183.0
200	236.5	233.5
250	271.5	268.5
300	321.3	319.3

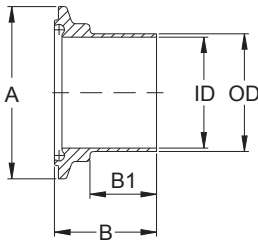
Clamp Union Connection DIN(Long)

Aseptic-Clamp Connections DIN11864-3 Form A



Size (DIN)	ODxIDxt	A	C
10	13.0 / 10.0 x 1.5	34.0	76.0
15	19.0 / 16.0 x 1.5	34.0	76.0
20	23.0 / 20.0 x 1.5	50.5	76.0
25	29.0 / 26.0 x 1.5	50.5	77.0
32	35.0 / 32.0 x 1.5	50.5	88.0
40	41.0 / 38.0 x 1.5	64.0	88.0
50	53.0 / 50.0 x 1.5	77.5	89.0
65	70.0 / 66.0 x 2.0	91.0	113.0
80	85.0 / 81.0 x 2.0	106.0	117.0
100	104.0 / 100.0 x 2.0	130.0	120.0

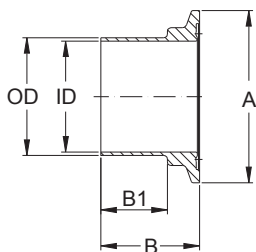
Clamp Nut DIN(Long)



Size (DIN)	ODxIDxt	A	B	B1
10	13.0 / 10.0 x 1.5	34.0	39.5	26.0
15	19.0 / 16.0 x 1.5	34.0	39.5	26.0
20	23.0 / 20.0 x 1.5	50.5	39.5	26.0
25	29.0 / 26.0 x 1.5	50.5	40.0	28.0
32	35.0 / 32.0 x 1.5	50.5	45.5	30.0
40	41.0 / 38.0 x 1.5	64.0	45.5	30.0
50	53.0 / 50.0 x 1.5	77.5	46.0	30.0
65	70.0 / 66.0 x 2.0	91.0	58.0	40.0
80	85.0 / 81.0 x 2.0	106.0	60.0	40.0
100	104.0 / 100.0 x 2.0	130.0	61.5	40.0

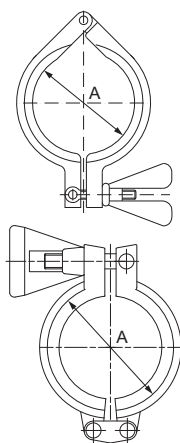
Clamp Liner DIN(Long)

Aseptic-Clamp Connections DIN11864-3 Form A



Size (DIN)	ODxIDxt	A	B	B1
10	13.0 / 10.0 x 1.5	34.0	38.0	26.0
15	19.0 / 16.0 x 1.5	34.0	38.0	26.0
20	23.0 / 20.0 x 1.5	50.5	38.0	26.0
25	29.0 / 26.0 x 1.5	50.5	38.5	28.0
32	35.0 / 32.0 x 1.5	50.5	44.0	30.0
40	41.0 / 38.0 x 1.5	64.0	44.0	30.0
50	53.0 / 50.0 x 1.5	77.5	44.5	30.0
65	70.0 / 66.0 x 2.0	91.0	56.5	40.0
80	85.0 / 81.0 x 2.0	106.0	58.5	40.0
100	104.0 / 100.0 x 2.0	130.0	60.0	40.0

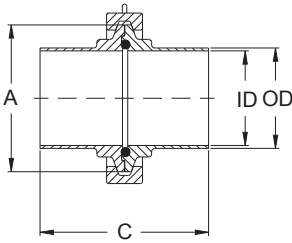
Heavy Duty Clamp



Size (DIN)	A
10	34.0
15	34.0
20	50.5
25	50.5
32	50.5
40	64.0
50	77.5
65	91.0
80	106.0
100	130.0

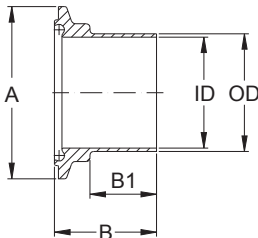
Clamp Union Connection Inch(Long)

Aseptic-Clamp Connections DIN11864-3 Form A



Size (Inch)	ODxIDxt	A	C
0.5"	12.70 / 9.40 x 1.65	34.0	76.0
0.75"	19.05 / 15.75 x 1.65	34.0	76.0
1.0"	25.40 / 22.10 x 1.65	50.5	77.0
1.5"	38.10 / 34.80 x 1.65	64.0	88.0
2.0"	50.80 / 47.50 x 1.65	77.5	89.0
2.5"	63.50 / 60.20 x 1.65	91.0	115.0
3.0"	76.20 / 72.90 x 1.65	106.0	117.0
4.0"	101.60 / 97.38 x 2.11	130.0	119.0

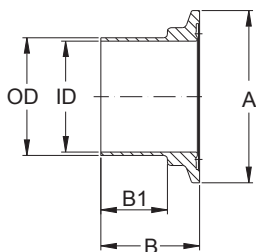
Clamp Nut Inch(Long)



Size (Inch)	ODxIDxt	A	B	B1
0.5"	12.70 / 9.40 x 1.65	34.0	39.5	26.0
0.75"	19.05 / 15.75 x 1.65	34.0	39.5	26.0
1.0"	25.40 / 22.10 x 1.65	50.5	40.0	28.0
1.5"	38.10 / 34.80 x 1.65	64.0	45.5	30.0
2.0"	50.80 / 47.50 x 1.65	77.5	46.0	30.0
2.5"	63.50 / 60.20 x 1.65	91.0	59.0	40.0
3.0"	76.20 / 72.90 x 1.65	106.0	60.0	40.0
4.0"	101.60 / 97.38 x 2.11	130.0	61.0	40.0

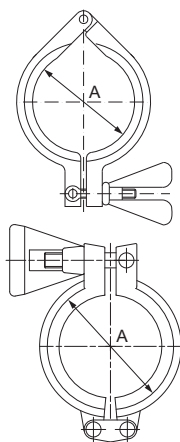
Clamp Liner Inch(Long)

Aseptic-Clamp Connections DIN11864-3 Form A



Size (Inch)	ODxIDxt	A	B	B1
0.5"	12.70 / 9.40 x 1.65	34.0	38.0	26.0
0.75"	19.05 / 15.75 x 1.65	34.0	38.0	26.0
1.0"	25.40 / 22.10 x 1.65	50.5	38.5	28.0
1.5"	38.10 / 34.80 x 1.65	64.0	44.0	30.0
2.0"	50.80 / 47.50 x 1.65	77.5	44.5	30.0
2.5"	63.50 / 60.20 x 1.65	91.0	57.5	40.0
3.0"	76.20 / 72.90 x 1.65	106.0	58.5	40.0
4.0"	101.60 / 97.38 x 2.11	130.0	59.5	40.0

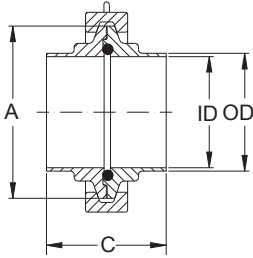
Heavy Duty Clamp



Size (Inch)	A
0.5"	34.0
0.75"	34.0
1.0"	50.5
1.5"	64.0
2.0"	77.5
2.5"	91.0
3.0"	106.5
4.0"	130.0

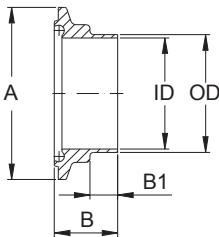
Clamp Union Connection DIN(Short)

Hygienic-Clamp Connections DIN11853-3



Size (DIN)	ODxIDxt	A	C
10	13.0 / 10.0 x 1.5	34.0	44.0
15	19.0 / 16.0 x 1.5	34.0	44.0
20	23.0 / 20.0 x 1.5	50.5	44.0
25	29.0 / 26.0 x 1.5	50.5	44.0
32	35.0 / 32.0 x 1.5	50.5	48.0
40	41.0 / 38.0 x 1.5	64.0	48.0
50	53.0 / 50.0 x 1.5	77.5	49.0
65	70.0 / 66.0 x 2.0	91.0	53.0
80	85.0 / 81.0 x 2.0	106.0	57.0
100	104.0 / 100.0 x 2.0	130.0	60.0

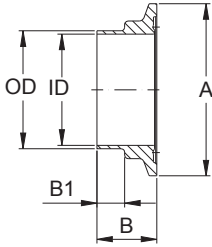
Clamp Nut DIN(Short)



Size (DIN)	ODxIDxt	A	B	B1
10	13.0 / 10.0 x 1.5	34.0	23.5	10.0
15	19.0 / 16.0 x 1.5	34.0	23.5	10.0
20	23.0 / 20.0 x 1.5	50.5	23.5	10.0
25	29.0 / 26.0 x 1.5	50.5	23.5	10.0
32	35.0 / 32.0 x 1.5	50.5	25.5	10.0
40	41.0 / 38.0 x 1.5	64.0	25.5	10.0
50	53.0 / 50.0 x 1.5	77.5	26.0	10.0
65	70.0 / 66.0 x 2.0	91.0	28.0	10.0
80	85.0 / 81.0 x 2.0	106.0	30.0	10.0
100	104.0 / 100.0 x 2.0	130.0	31.5	10.0

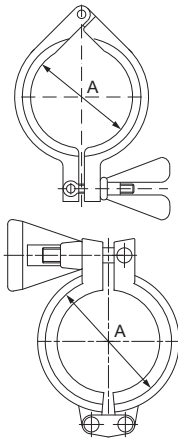
Clamp Liner DIN(Short)

Hygienic-Clamp Connections DIN11853-3



Size (DIN)	ODxIDxt	A	B	B1
10	13.0 / 10.0 x 1.5	34.0	22.0	10.0
15	19.0 / 16.0 x 1.5	34.0	22.0	10.0
20	23.0 / 20.0 x 1.5	50.5	22.0	10.0
25	29.0 / 26.0 x 1.5	50.5	22.0	10.0
32	35.0 / 32.0 x 1.5	50.5	24.0	10.0
40	41.0 / 38.0 x 1.5	64.0	24.0	10.0
50	53.0 / 50.0 x 1.5	77.5	24.5	10.0
65	70.0 / 66.0 x 2.0	91.0	26.5	10.0
80	85.0 / 81.0 x 2.0	106.0	28.5	10.0
100	104.0 / 100.0 x 2.0	130.0	30.0	10.0

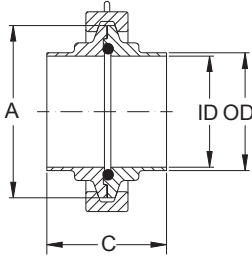
Heavy Duty Clamp



Size (DIN)	A
10	34.0
15	34.0
20	50.5
25	50.5
32	50.5
40	64.0
50	77.5
65	91.0
80	106.0
100	130.0

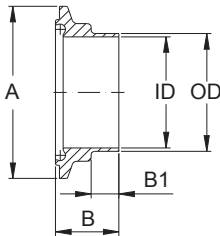
Clamp Union Connection Inch(Short)

Hygienic-Clamp Connections DIN11853-3



Size (Inch)	ODxIDxt	A	C
0.5"	12.70 / 9.40 x 1.65	34.0	44.0
0.75"	19.05 / 15.75 x 1.65	34.0	44.0
1.0"	25.40 / 22.10 x 1.65	50.5	44.0
1.5"	38.10 / 34.80 x 1.65	64.0	48.0
2.0"	50.80 / 47.50 x 1.65	77.5	49.0
2.5"	63.50 / 60.20 x 1.65	91.0	55.0
3.0"	76.20 / 72.90 x 1.65	106.0	57.0
4.0"	101.60 / 97.38 x 2.11	130.0	59.0

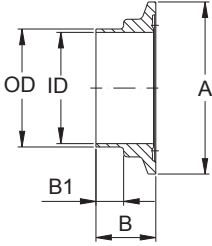
Clamp Nut Inch(Short)



Size (Inch)	ODxIDxt	A	B	B1
0.5"	12.70 / 9.40 x 1.65	34.0	23,5	10.0
0.75"	19.05 / 15.75 x 1.65	34.0	23,5	10.0
1.0"	25.40 / 22.10 x 1.65	50.5	23.5	10.0
1.5"	38.10 / 34.80 x 1.65	64.0	25.5	10.0
2.0"	50.80 / 47.50 x 1.65	77.5	26.0	10.0
2.5"	63.50 / 60.20 x 1.65	91.0	29.0	10.0
3.0"	76.20 / 72.90 x 1.65	106.0	30.0	10.0
4.0"	101.60 / 97.38 x 2.11	130.0	31.0	10.0

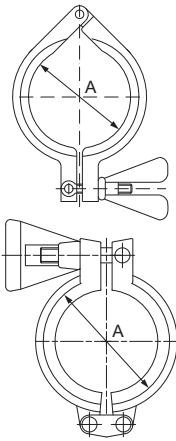
Clamp Liner Inch(Short)

Hygienic-Clamp Connections DIN11853-3



Size (Inch)	ODxIDxt	A	B	B1
0.5"	12.70 / 9.40 x 1.65	34.0	22.0	10.0
0.75"	19.05 / 15.75 x 1.65	34.0	22.0	10.0
1.0"	25.40 / 22.10 x 1.65	50.5	22.0	10.0
1.5"	38.10 / 34.80 x 1.65	64.0	24.0	10.0
2.0"	50.80 / 47.50 x 1.65	77.5	24.5	10.0
2.5"	63.50 / 60.20 x 1.65	91.0	27.5	10.0
3.0"	76.20 / 72.90 x 1.65	106.0	28.5	10.0
4.0"	101.60 / 97.38 x 2.11	130.0	29.5	10.0

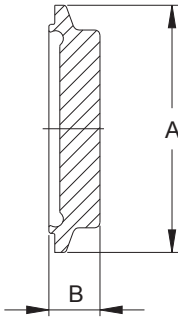
Heavy Duty Clamp



Size (Inch)	A
0.5"	34.0
0.75"	34.0
1.0"	50.5
1.5"	64.0
2.0"	77.5
2.5"	91.0
3.0"	106.5
4.0"	130.0

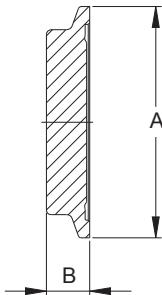
**DIN 11853-3 & DIN11864-3
Form A(DIN)**

Blind Nut Clamp DIN



Size (DIN)	A	B
10	34.0	13
15	34.0	13
20	50.5	13
25	50.5	13
32	50.5	13
40	64.0	13
50	77.5	15
65	91.0	15
80	106.0	15
100	130.0	15

Blind Liner Clamp DIN



Size (DIN)	A	B
10	34.0	11.5
15	34.0	11.5
20	50.5	11.5
25	50.5	11.5
32	50.5	11.5
40	64.0	11.5
50	77.5	13.5
65	91.0	13.5
80	106.0	13.5
100	130.0	13.5

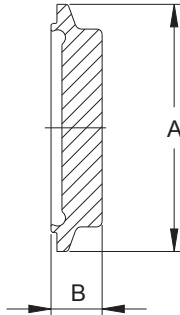
Clamp Gasket DIN



Size (DIN)	A	B
10	12	3.5
15	18	3.5
20	22	3.5
25	28	3.5
32	34	5.0
40	40	5.0
50	52	5.0
65	68	5.0
80	83	5.0
100	102	5.0

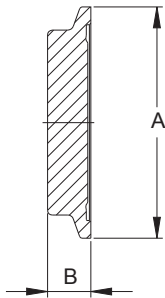
**DIN 11853-3 & DIN11864-3
Form A(Inch)**

Blind Nut Clamp Inch



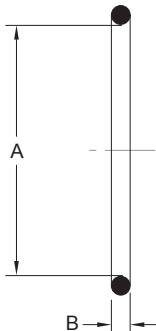
Size (Inch)	A	B
0.5"	34.0	13.0
0.75"	34.0	13.0
1.0"	50.5	13.0
1.5"	64.0	13.0
2.0"	77.5	15.0
2.5"	91.0	15.0
3.0"	106.0	15.0
4.0"	130.0	15.0

Blind Liner Inch



Size (Inch)	A	B
0.5"	34.0	11.5
0.75"	34.0	11.5
1.0"	50.5	11.5
1.5"	64.0	11.5
2.0"	77.5	13.5
2.5"	91.0	13.5
3.0"	106.0	13.5
4.0"	130.0	13.5

Clamp Gasket Inch



Size (Inch)	A	B
0.5"	12.0	3.5
0.75"	18.0	3.5
1.0"	24.0	3.5
1.5"	37.0	5.0
2.0"	50.0	5.0
2.5"	62.0	5.0
3.0"	75.0	5.0
4.0"	100.0	5.0