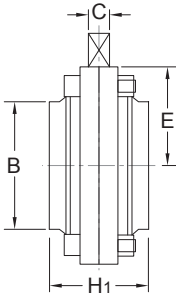


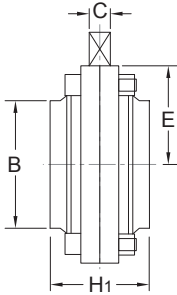
Butterfly Valve-Weld End(DIN)

Butterfly Valve



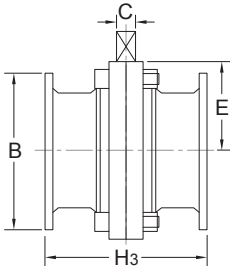
Size (DIN)	E	H1	C	B
25	39.0	50.0	8.0	29/26x1.5
32	43.0	50.0	8.0	35/32x1.5
40	45.0	50.0	8.0	41/38x1.5
50	53.0	52.0	10.0	53/50x1.5
65	62.0	56.0	10.0	70/66x2.0
80	69.5	60.0	10.0	85/81x2.0
100	79.5	64.0	10.0	104/100x2.0
125	92.5	80.0	12.0	129/125x2.0
150	107.5	90.0	14.0	154/150x2.0
200	150.0	74.0	17.0	204/2000x2.0

Butterfly Valve-Weld End(Inch)



Size (Inch)	E	H1	C	B
1.0"	35.0	47.0	8.0	25.4 / 22.4 x 1.5
1.5"	37.5	47.0	8.0	38.1 / 35.1 x 1.5
2.0"	48.0	52.0	8.0	50.8 / 47.8 x 1.5
2.5"	52.0	54.0	8.0	63.5 / 60.5 x 1.5
3.0"	57.5	62.0	10.0	76.2 / 73.2 x 1.5
4.0"	73.0	76.0	12.0	101.6 / 97.6 x 2.0

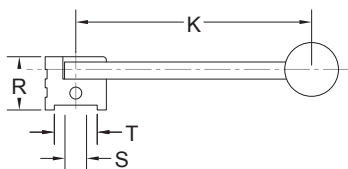
Butterfly Valve-Clamp End(Inch)



Size (Inch)	E	H3	C	B
1.0"	35.0	90.0	8.0	50.5
1.5"	37.5	90.0	8.0	50.5
2.0"	48.0	95.0	8.0	64.0
2.5"	52.0	97.0	8.0	77.5
3.0"	57.5	105.0	10.0	91.0
4.0"	73.0	119.0	12.0	119.0

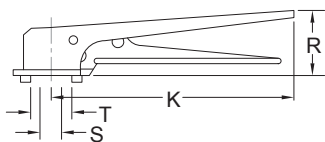
Butterfly Valve-3 Position Pull Handle

Butterfly Valve



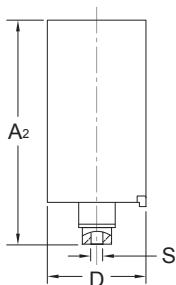
Size (Inch/DIN)	K	R	T	S
1.0" -2.5"	122	42	22.2	8
3"	162	44	30.2	10
4.0"	162	44	30.2	12
DN25-40	122	40	20.2	8
DN50-100	122	40	22.2	10

Butterfly Valve-Gripper Handle



Size (Inch)	K	R	T	S
1.0" -2.5"	150	52	22	8

Air Actuator For Butterfly Valve



Size (Inch/DIN)	A2	D	S
1.0" -2.5"	185.0	85.0	8
3"	185.0	85.0	10
4.0"	185.0	85.0	12
DN25-40	185.0	85.0	8
DN50-100	185.0	85.0	10
DN125	220.0	108.0	12
DN150	220.0	108.0	14