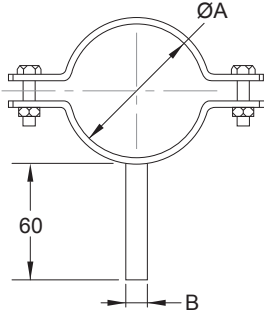


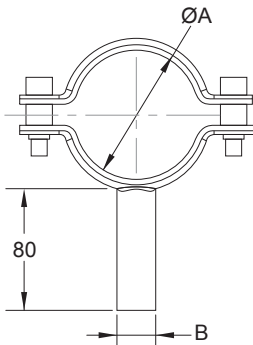
Pipe Hanger Without Groove Type

Pipe Hanger



Size (Inch/DIN)	A	B
0.5"/10	12.7	8.0
0.75"/15	19.1	12.0
20	23.0	12.0
1.0"	25.4	12.0
25	29.0	12.0
32	35.0	12.0
1.5"	38.1	12.0
40	41.0	12.0
2.0"	50.8	12.0
50	53.0	12.0
2.5"	63.5	12.0
65	70.0	12.0
3.0"	76.2	12.0
3.5"	88.9	12.0
80	85.0	12.0
4.0" / 100	101.6	12.0
4.5"	114.3	12.0
5.0" / 125	129.0	12.0
5.5"	139.7	12.0
6.0" / 150	154.0	15.0
8.0" / 200	204.0	15.0
10.0" / 250	254.0	15.0
12.0" / 300	306.0	15.0

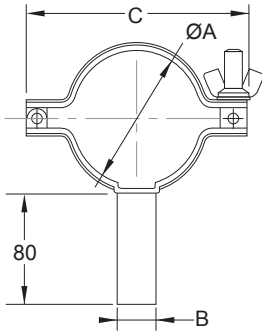
Pipe Hanger 2 Bolts Type With Groove



Size (Inch/DIN)	A	B
0.5"/10	13	19
0.75"/15	19	19
20	23	19
1.0"/25	29	19
32	35	19
1.5" / 40	41	19
2.0" / 50	53	19
2.5"	63.5	19
65	70	19
3.0"	76.2	19
80	85	19
4.0" / 100	104	19
4.5"	114.3	19
125	129	19
150	154	19

Pipe Hanger Wing Nut Type With Groove

Pipe Hanger



Size (Inch)	A	B	C
1.0"	25.4	19	66
1.5"	38.1	19	79
2.0"	50.8	19	90
2.5"	63.5	19	105
3.0"	76.2	19	120
4.0"	101.6	19	146