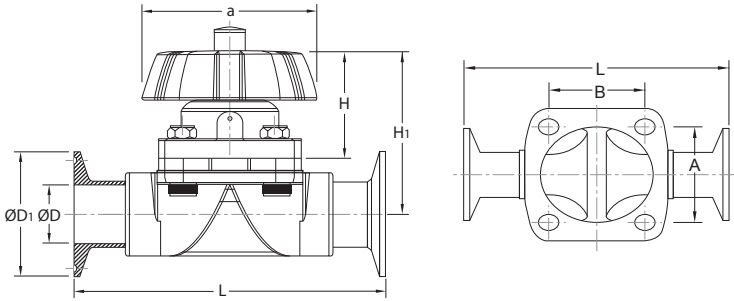


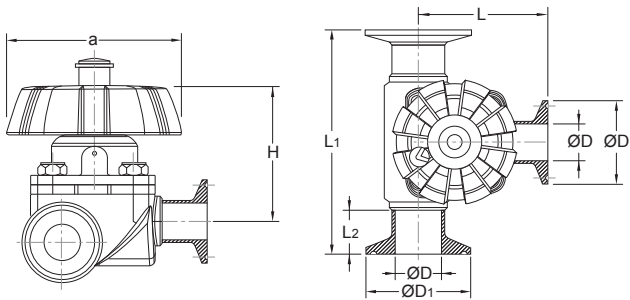
# Manual Diaphragm Valve With Indicator, Clamp End

## Diaphragm Valve



Size	a	A	B	D	D1	L	H	H1
0.5"	35.0	25.0	25.0	9.7	25.2	89.0	47.0	56.0
0.75"	50.0	36.0	34.0	16.0	25.2	105.0	53.0	72.0
1.0"	85.0	53.0	45.0	22.4	50.5	125.0	67.0	92.0
1.5"	110.0	70.0	66.0	35.1	50.5	161.0	82.0	115.0
2.0"	110.0	81.0	73.0	47.8	64.0	192.0	89.0	129.0
2.5"	140.0	110.0	92.0	60.5	77.5	223.0	105.0	150.0

# Manual Diaphragm Valve T-Type, Clamp End



Size	a	D	D1	L	L1	L2	H
0.75"	50.0	16.0	25.2	64.0	120.0	28.0	70.0
1.0"	85.0	22.4	50.5	81.0	143.0	28.0	87.0
1.5"	110.0	35.1	50.5	104.0	172.0	28.0	112.0
2.0"	110.0	47.8	64.0	119.0	186.0	28.0	128.0

Alternatively selection of reducing body

1.0" x 0.75"

1.5" x 0.75"

1.5" x 1.0"

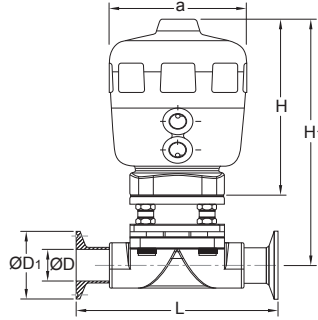
2.0" x 0.75"

2.0" x 1.0"

2.0" x 1.5"

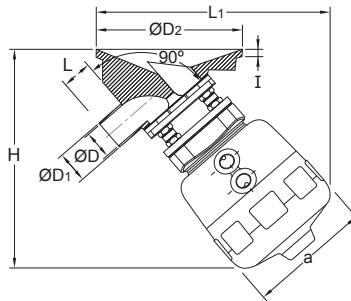
# Pneumatic Diaphragm Valve Valve Clamp End

# Diaphragm Valve



Size	a	D	D1	L	H	H1
0.5"	53.0	9.7	25.2	89.0	85.0	116.0
0.75"	79.0	16.0	25.2	105.0	117.0	166.0
1.0"	100.0	22.4	50.5	125.0	156.0	211.0
1.5"	115.0	35.1	50.5	161.0	175.0	245.0
2.0"	125.0	47.8	64.0	192.0	208.0	293.0

# Pneumatic Tank Diaphragm Valve



Size	a	D	D1	D2	L	L1	H1	I
0.75"	79.0	16.0	19.0	90.0	28.0	171.0	159.0	6.0
1.0"	100.0	22.4	25.4	120.0	28.0	218.0	196.0	6.0
1.5"	115.0	35.1	38.1	160.0	28.0	265.0	230.0	6.0
2.0"	125.0	47.8	50.8	200.0	28.0	325.0	270.0	6.0