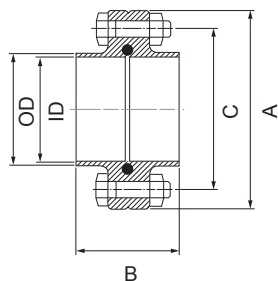


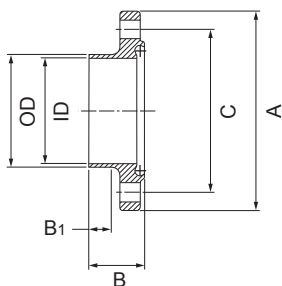
Flange Connection DIN(Short)

Hygienic-Flange DIN11853-2



Size (DIN)	OD/IDxt	A	B	C
10	13.0 / 10.0 x 1.5	54.0	48.0	37 (4 / M8 x 30)
15	19.0 / 16.0 x 1.5	59.0	48.0	42 (4 / M8 x 30)
20	23.0 / 20.0 x 1.5	64.0	48.0	47 (4 / M8 x 30)
25	29.0 / 26.0 x 1.5	70.0	48.0	53 (4 / M8 x 30)
32	35.0 / 32.0 x 1.5	76.0	48.0	59 (4 / M8 x 30)
40	41.0 / 38.0 x 1.5	82.0	48.0	65 (4 / M8 x 30)
50	53.0 / 50.0 x 1.5	94.0	48.0	77 (4 / M8 x 30)
65	70.0 / 66.0 x 2.0	113.0	48.0	95 (8 / M8 x 30)
80	85.0 / 81.0 x 2.0	133.0	52.0	112 (8 / M10 x 35)
100	104.0 / 100.0 x 2.0	159.0	52.0	137 (8 / M10 x 40)
125	129.0 / 125.0 x 2.0	183.0	56.0	161 (8 / M10 x 40)
150	154.0 / 150.0 x 2.0	213.0	56.0	188 (8 / M12 x 50)

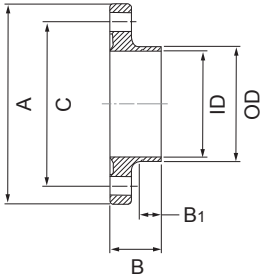
Nut Flange DIN(Short)



Size (DIN)	OD/IDxt	A	B	B1	C
10	13.0 / 10.0 x 1.5	54.0	25.5	10.0	37 (4 x Ø 9)
15	19.0 / 16.0 x 1.5	59.0	25.5	10.0	42 (4 x Ø 9)
20	23.0 / 20.0 x 1.5	64.0	25.5	10.0	47 (4 x Ø 9)
25	29.0 / 26.0 x 1.5	70.0	25.5	10.0	53 (4 x Ø 9)
32	35.0 / 32.0 x 1.5	76.0	25.5	10.0	59 (4 x Ø 9)
40	41.0 / 38.0 x 1.5	82.0	25.5	10.0	65 (4 x Ø 9)
50	53.0 / 50.0 x 1.5	94.0	25.5	10.0	77 (4 x Ø 9)
65	70.0 / 66.0 x 2.0	113.0	25.5	10.0	95 (8 x Ø 9)
80	85.0 / 81.0 x 2.0	133.0	27.5	10.0	112 (8 x Ø 11)
100	104.0 / 100.0 x 2.0	159.0	27.5	10.0	137 (8 x Ø 11)
125	129.0 / 125.0 x 2.0	183.0	29.5	10.0	161 (8 x Ø 11)
150	154.0 / 150.0 x 2.0	213.0	29.5	8.0	188 (8 x Ø 14)

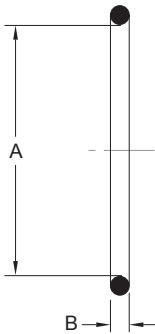
Liner Flange DIN(Short)

Hygienic-Flange DIN11853-2



Size (DIN)	OD/IDxt	A	B	B1	C
10	13.0 / 10.0 x 1.5	54.0	24.0	10.0	37 (4 x Ø 9)
15	19.0 / 16.0 x 1.5	59.0	24.0	10.0	42 (4 x Ø 9)
20	23.0 / 20.0 x 1.5	64.0	24.0	10.0	47 (4 x Ø 9)
25	29.0 / 26.0 x 1.5	70.0	24.0	10.0	53 (4 x Ø 9)
32	35.0 / 32.0 x 1.5	76.0	24.0	10.0	59 (4 x Ø 9)
40	41.0 / 38.0 x 1.5	82.0	24.0	10.0	65 (4 x Ø 9)
50	53.0 / 50.0 x 1.5	94.0	24.0	10.0	77 (4 x Ø 9)
65	70.0 / 66.0 x 2.0	113.0	24.0	10.0	95 (8 x Ø 9)
80	85.0 / 81.0 x 2.0	133.0	26.0	10.0	112 (8 x Ø 11)
100	104.0 / 100.0 x 2.0	159.0	26.0	10.0	137 (8 x Ø 11)
125	129.0 / 125.0 x 2.0	183.0	28.0	10.0	161 (8 x Ø 11)
150	154.0 / 150.0 x 2.0	213.0	28.0	8.0	188 (8 x Ø 14)

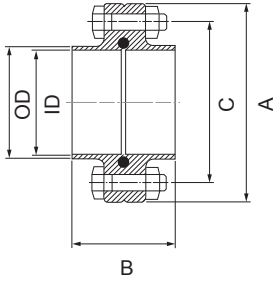
Flange Gasket



Size (DIN)	A	B
10	12.0	3.5
15	18.0	3.5
20	22.0	3.5
25	28.0	3.5
32	34.0	5.0
40	40.0	5.0
50	52.0	5.0
65	68.0	5.0
80	83.0	5.0
100	102.0	5.0
125	127.0	5.0
150	152.0	5.0

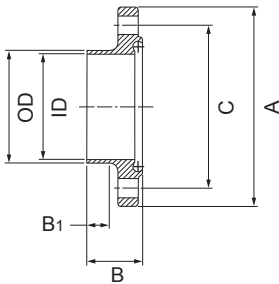
Flange Connection Inch(Short)

Hygienic-Flange DIN11853-2



Size (Inch)	OD/IDxt	A	B	C
0.5"	12.70 / 9.40 x 1.65	54.0	48.0	37 (4 / M8 x 30)
0.75"	19.05 / 15.75 x 1.65	59.0	48.0	42 (4 / M8 x 30)
1.0"	25.40 / 22.10 x 1.65	66.0	48.0	49 (4 / M8 x 30)
1.5"	38.10 / 34.80 x 1.65	79.0	48.0	62 (4 / M8 x 30)
2.0"	50.80 / 47.50 x 1.65	92.0	48.0	75 (4 / M8 x 30)
2.5"	63.50 / 60.20 x 1.65	107.0	48.0	89 (8 / M8 x 30)
3.0"	76.20 / 72.90 x 1.65	125.0	48.0	104 (8 / M10 x 35)
4.0"	101.60 / 97.38 x 2.11	157.0	52.0	135 (8 / M10 x 40)

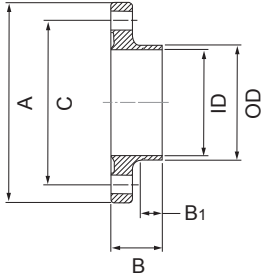
Nut Flange Inch(Short)



Size (Inch)	OD/IDxt	A	B	B1	C
0.5"	12.70 / 9.40 x 1.65	54.0	25.5	10.0	37 (4 x Ø 9)
0.75"	19.05 / 15.75 x 1.65	59.0	25.5	10.0	42 (4 x Ø 9)
1.0"	25.40 / 22.10 x 1.65	66.0	25.5	10.0	49 (4 x Ø 9)
1.5"	38.10 / 34.80 x 1.65	79.0	25.5	10.0	62 (4 x Ø 9)
2.0"	50.80 / 47.50 x 1.65	92.0	25.5	10.0	75 (4 x Ø 9)
2.5"	63.50 / 60.20 x 1.65	107.0	25.5	10.0	89 (8 x Ø 9)
3.0"	76.20 / 72.90 x 1.65	125.0	25.5	8.0	104 (8 x Ø 11)
4.0"	101.60 / 97.38 x 2.11	157.0	27.5	8.0	135 (8 x Ø 11)

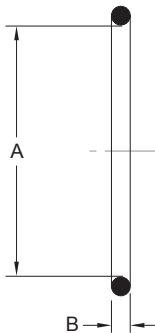
Liner Flange Inch(Short)

**Hygienic-Flange
DIN11853-2**



Size (Inch)	OD/IDxt	A	B	B1	C
0.5"	12.70 / 9.40 x 1.65	54.0	24.0	10.0	37 (4 x Ø 9)
0.75"	19.05 / 15.75 x 1.65	59.0	24.0	10.0	42 (4 x Ø 9)
1.0"	25.40 / 22.10 x 1.65	66.0	24.0	10.0	49 (4 x Ø 9)
1.5"	38.10 / 34.80 x 1.65	79.0	24.0	10.0	62 (4 x Ø 9)
2.0"	50.80 / 47.50 x 1.56	92.0	24.0	10.0	75 (4 x Ø 9)
2.5"	63.50 / 60.20 x 1.65	107.0	24.0	10.0	89 (8 x Ø 9)
3.0"	76.20 / 72.90 x 1.65	125.0	24.0	8.0	104 (8 x Ø 11)
4.0"	101.60 / 97.38 x 2.11	157.0	26.0	8.0	135 (8 x Ø 11)

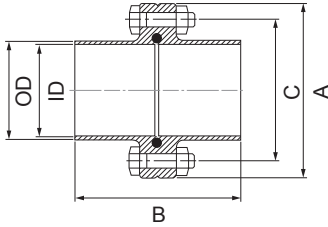
Flange Gasket



Size (Inch)	A	B
0.5"	12.0	3.5
0.75"	18.0	3.5
1.0"	24.0	3.5
1.5"	37.0	5.0
2.0"	50.0	5.0
2.5"	62.0	5.0
3.0"	75.0	5.0
4.0"	100.0	5.0

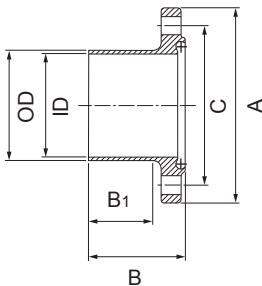
Flange Connection DIN(Long)

Aseptic-Flange DIN11864-2 Form A



Size (DIN)	OD/IDxt	A	B	C
10	13.0 / 10.0 x 1.5	54.0	80.0	37 (4 / M8 x 30)
15	19.0 / 16.0 x 1.5	59.0	80.0	42 (4 / M8 x 30)
20	23.0 / 20.0 x 1.5	64.0	80.0	47 (4 / M8 x 30)
25	29.0 / 26.0 x 1.5	70.0	80.0	53 (8 / M8 x 30)
32	35.0 / 32.0 x 1.5	76.0	90.0	59 (4 / M8 x 30)
40	41.0 / 38.0 x 1.5	82.0	90.0	65 (4 / M8 x 30)
50	53.0 / 50.0 x 1.5	94.0	90.0	77 (4 / M8 x 30)
65	70.0 / 66.0 x 2.0	113.0	108.0	95 (8 / M8 x 30)
80	85.0 / 81.0 x 2.0	133.0	116.0	112 (8 / M10 x 35)
100	104.0 / 100.0 x 2.0	159.0	116.0	137 (8 / M10 x 40)
125	129.0 / 125.0 x 2.0	183.0	120.0	161 (8 / M10 x 40)
150	154.0 / 150.0 x 2.0	213.0	120.0	188 (8 / M12 x 50)

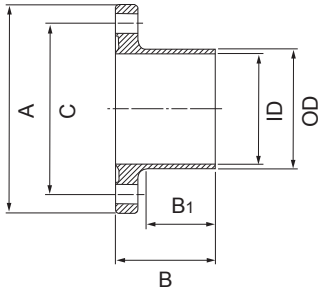
Nut Flange DIN(Long)



Size (DIN)	OD/IDxt	A	B	B1	C
10	13.0 / 10.0 x 1.5	54.0	41.5	26	37 (4 x Ø 9)
15	19.0 / 16.0 x 1.5	59.0	41.5	26	42 (4 x Ø 9)
20	23.0 / 20.0 x 1.5	64.0	41.5	26	47 (4 x Ø 9)
25	29.0 / 26.0 x 1.5	70.0	41.5	26	53 (4 x Ø 9)
32	35.0 / 32.0 x 1.5	76.0	46.5	31	59 (4 x Ø 9)
40	41.0 / 38.0 x 1.5	82.0	46.5	31	65 (4 x Ø 9)
50	53.0 / 50.0 x 1.5	94.0	46.5	31	77 (4 x Ø 9)
65	70.0 / 66.0 x 2.0	113.0	55.5	42	95 (8 x Ø 9)
80	85.0 / 81.0 x 2.0	133.0	59.5	42	112 (8 x Ø 11)
100	104.0 / 100.0 x 2.0	159.0	59.5	42	137 (8 x Ø 11)
125	129.0 / 125.0 x 2.0	183.0	61.5	42	161 (8 x Ø 11)
150	154.0 / 150.0 x 2.0	213.0	61.5	40	188 (8 x Ø 14)

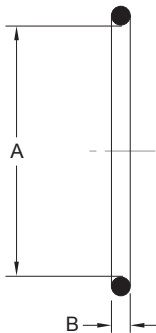
Liner Flange DIN(Long)

Aseptic-Flange DIN11864-2 Form A



Size (DIN)	OD/IDxt	A	B	B1	C
10	13.0 / 10.0 x 1.5	54.0	40.0	26.0	37 (4 x Ø 9)
15	19.0 / 16.0 x 1.5	59.0	40.0	26.0	42 (4 x Ø 9)
20	23.0 / 20.0 x 1.5	64.0	40.0	26.0	47 (4 x Ø 9)
25	29.0 / 26.0 x 1.5	70.0	40.0	26.0	53 (4 x Ø 9)
32	35.0 / 32.0 x 1.5	76.0	45.0	31.0	59 (4 x Ø 9)
40	41.0 / 38.0 x 1.5	82.0	45.0	31.0	65 (4 x Ø 9)
50	53.0 / 50.0 x 1.5	94.0	45.0	31.0	77 (4 x Ø 9)
65	70.0 / 66.0 x 2.0	113.0	54.0	42.0	95 (8 x Ø 9)
80	85.0 / 81.0 x 2.0	133.0	58.0	42.0	112 (8 x Ø 11)
100	104.0 / 100.0 x 2.0	159.0	58.0	42.0	137 (8 x Ø 11)
125	129.0 / 125.0 x 2.0	183.0	60.0	42.0	161 (8 x Ø 11)
150	154.0 / 150.0 x 2.0	213.0	60.0	40.0	188 (8 x Ø 14)

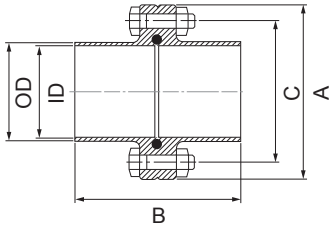
Flange Gasket



Size (DIN)	A	B
10	12.0	3.5
15	18.0	3.5
20	22.0	3.5
25	28.0	3.5
32	34.0	5.0
40	40.0	5.0
50	52.0	5.0
65	68.0	5.0
80	83.0	5.0
100	102.0	5.0
125	127.0	5.0
150	152.0	5.0

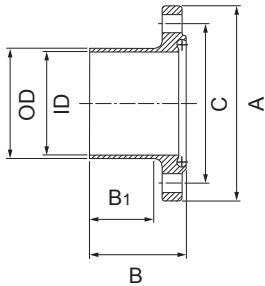
Flange Connection Inch(Long)

Aseptic-Flange DIN11864-2 Form A



Size (Inch)	OD/IDxt	A	B	C
0.5"	12.70 / 9.40 x 1.65	54.0	80.0	37 (4 / M8 x 30)
0.75"	19.05 / 15.75 x 1.65	59.0	80.0	42 (4 / M8 x 30)
1.0"	25.40 / 22.10 x 1.65	66.0	80.0	49 (4 / M8 x 30)
1.5"	38.10 / 34.80 x 1.65	79.0	90.0	62 (4 / M8 x 30)
2.0"	50.80 / 47.50 x 1.65	92.0	90.0	75 (4 / M8 x 30)
2.5"	63.50 / 60.20 x 1.65	107.0	108.0	89 (8 / M8 x 30)
3.0"	76.20 / 72.90 x 1.65	125.0	112.0	104 (8 / M10 x 30)
4.0"	101.60 / 97.38 x 2.11	157.0	116.0	135 (8 / M10 x 35)

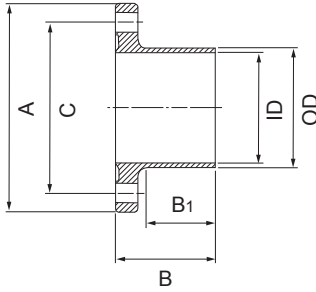
Nut Flange Inch(Long)



Size (Inch)	OD/IDxt	A	B	B1	C
0.5"	12.70 / 9.40 x 1.65	54.0	41.5	26.0	37 (4 x Ø 9)
0.75"	19.05 / 15.75 x 1.65	59.0	41.5	26.0	42 (4 x Ø 9)
1.0"	25.40 / 22.10 x 1.65	66.0	41.5	26.0	49 (4 x Ø 9)
1.5"	38.10 / 34.80 x 1.65	79.0	46.5	31.0	62 (4 x Ø 9)
2.0"	50.80 / 47.50 x 1.65	92.0	46.5	31.0	75 (4 x Ø 9)
2.5"	63.50 / 60.20 x 1.65	107.0	55.5	42.0	89 (8 x Ø 9)
3.0"	76.20 / 72.90 x 1.65	125.0	57.5	42.0	104 (8 x Ø 11)
4.0"	101.60 / 97.38 x 2.11	157.0	59.5	42.0	135 (8 x Ø 11)

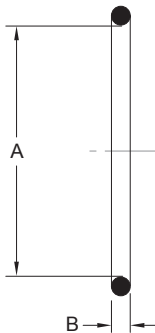
Liner Flange Inch(Long)

Aseptic-Flange DIN11864-2 Form A



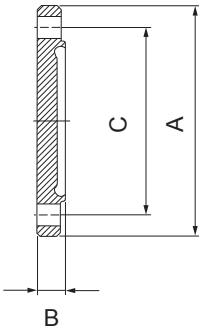
Size (Inch)	OD/IDxt	A	B	B1	C
0.5"	12.70 / 9.40 x 1.65	54.0	40.0	26	37 (4 x Ø 9)
0.75"	19.05 / 15.75 x 1.65	59.0	40.0	26	42 (4 x Ø 9)
1.0"	25.40 / 22.10 x 1.65	66.0	40.0	26	49 (4 x Ø 9)
1.5"	38.10 / 34.80 x 1.65	79.0	45.0	31	62 (4 x Ø 9)
2.0"	50.80 / 47.50 x 1.65	92.0	45.0	31	75 (4 x Ø 9)
2.5"	63.50 / 60.20 x 1.65	107.0	54.0	42	89 (8 x Ø 9)
3.0"	76.20 / 72.90 x 1.65	125.0	56.0	42	104 (8 x Ø 11)
4.0"	101.60 / 97.38 x 2.11	157.0	58.0	42	135 (8 x Ø 11)

Flange Gasket



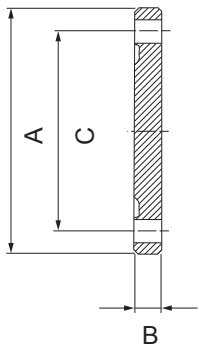
Size (Inch)	A	B
0.5"	12.0	3.5
0.75"	18.0	3.5
1.0"	24.0	3.5
1.5"	37.0	5.0
2.0"	50.0	5.0
2.5"	62.0	5.0
3.0"	75.0	5.0
4.0"	100.0	5.0

Blind Nut Flange Inch DIN11853-2 & DIN11864-2 Form A



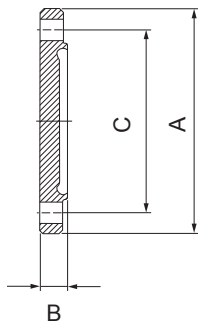
Size (Inch)	A	B	C
0.5"	54.0	11.5	37 (4 x Ø 9)
0.75"	59.0	11.5	42 (4 x Ø 9)
1.0"	66.0	11.5	49 (4 x Ø 9)
1.5"	79.0	11.5	62 (4 x Ø 9)
2.0"	92.0	11.5	75 (4 x Ø 9)
2.5"	107.0	11.5	89 (8 x Ø 9)
3.0"	125.0	13.5	104 (8 x Ø 11)
4.0"	157.0	15.5	135 (8 x Ø 11)

Blind Liner Flange Inch



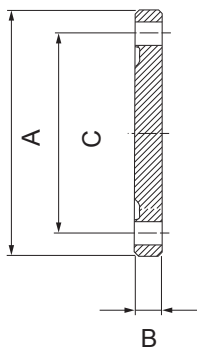
Size (Inch)	A	B	C
0.5"	54.0	10.0	37 (4 x Ø 9)
0.75"	59.0	10.0	42 (4 x Ø 9)
1.0"	66.0	10.0	49 (4 x Ø 9)
1.5"	79.0	10.0	62 (4 x Ø 9)
2.0"	92.0	10.0	75 (4 x Ø 9)
2.5"	107.0	10.0	89 (8 x Ø 9)
3.0"	125.0	12.0	104 (8 x Ø 11)
4.0"	157.0	14.0	135 (8 x Ø 11)

Blind Nut Flange DIN DIN11853-2 & DIN11864-2 Form A



Size (DIN)	A	B	C
10	54.0	11.5	37 (4 x Ø 9)
15	59.0	11.5	42 (4 x Ø 9)
20	64.0	11.5	47 (4 x Ø 9)
25	70.0	11.5	53 (4 x Ø 9)
32	76.0	11.5	59 (4 x Ø 9)
40	82.0	11.5	65 (4 x Ø 9)
50	94.0	11.5	77 (4 x Ø 9)
65	113.0	11.5	95 (8 x Ø 9)
80	133.0	13.5	112 (8 x Ø 11)
100	159.0	15.5	137 (8 x Ø 11)
125	183.0	15.5	161 (8 x Ø 11)
150	213.0	17.5	188 (8 x Ø 14)

Blind Liner Flange DIN



Size (DIN)	A	B	C
10	54.0	10.0	37 (4 x Ø 9)
15	59.0	10.0	42 (4 x Ø 9)
20	64.0	10.0	47 (4 x Ø 9)
25	70.0	10.0	53 (4 x Ø 9)
32	76.0	10.0	59 (4 x Ø 9)
40	82.0	10.0	65 (4 x Ø 9)
50	94.0	10.0	77 (4 x Ø 9)
65	113.0	10.0	95 (8 x Ø 9)
80	133.0	12.0	112 (8 x Ø 11)
100	159.0	14.0	137 (8 x Ø 11)
125	183.0	14.0	161 (8 x Ø 11)
150	213.0	16.0	188 (8 x Ø 14)